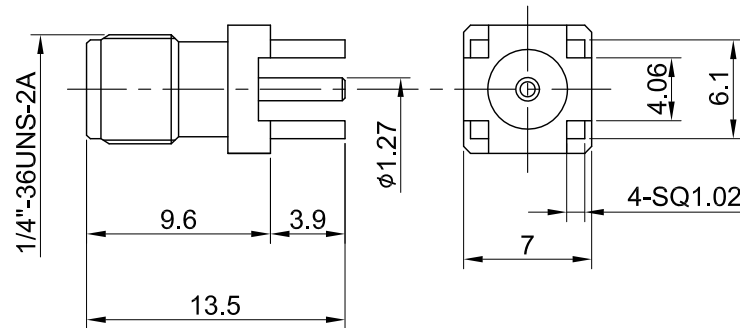
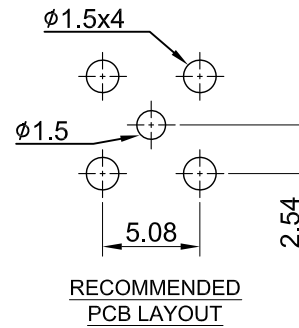


REV	DESCRIPTION	DATE
1.10	UPDATE DRAWING	2023/07/14
1.11	UPDATE INSULATION RESISTANCE	2023/10/05



MECHANICAL DATA
 DURABILITY : 500 CYCLES
 TEMPERATURE RANGE : -65°C ~ + 165°C

ELECTRICAL DATA
 FREQUENCY RANGE: DC~6GHZ
 IMPEDANCE : 50Ω
 VSWR : 1.3 MAX.
 WORKING VOLTAGE : AC 500V
 WITHSTANDING VOLTAGE : AC 1000V
 INSULATION RESISTANCE : 5000 MΩ MIN

03	CENTER PIN	Be.Cu	GOLD	1
02	INSULATOR	TEFLON	NONE	1
01	BODY	BRASS	GOLD	1
NO	DESCRIPTION	MATERIAL	FINISH	Q'TY

TITLE		DRAWN BY: Kelly		2023/10/05	
SMA(F) st. PCB type, leg length:3.9mm		CHK'D BY: David		2023/10/05	
DWG NO. C02AN31P00101					
CUST. P/N: N/A		GENERAL TOLERANCES .X ±0.2 .XX ±0.2 .XXX ±0.2 ANGLES N/A		REV. 1.11	
DWG NO: N/A		DA2310050001			
SHEET 1 of 1	Unit: mm				