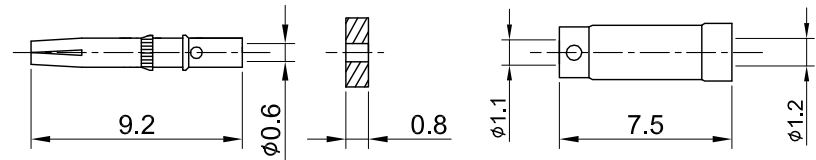
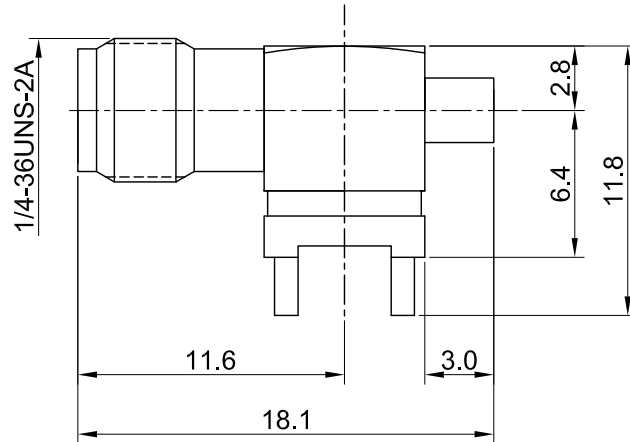
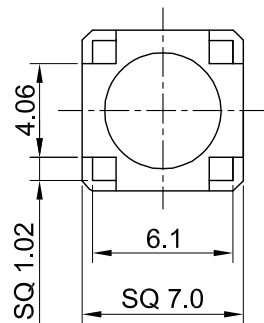
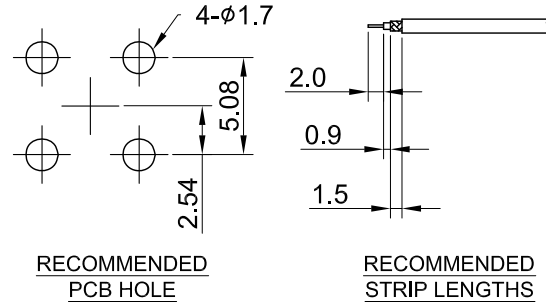


REV	DESCRIPTION	DATE
1.01	ADD RECOMMENDED MOUNTING HOLE	2016/07/27
1.10	NEW DRAWING FRAME	2024/03/08



MECHANICAL DATA
 DURABILITY : 500 CYCLES
 TEMPERATURE RANGE : -65°C ~ + 165°C

ELECTRICAL DATA
 FREQUENCY RANGE: DC~6GHz
 IMPEDANCE : 50Ω
 VSWR : 1.5 MAX.
 WORKING VOLTAGE : AC 170V
 WITHSTANDING VOLTAGE : AC 500V
 INSULATION RESISTANCE : 5000 MΩ MIN

05	INSULATOR B	TEFLON	NONE	1
04	SLEEVE	BRASS	GOLD	1
03	CENTER PIN	Be.Cu	GOLD	1
02	INSULATOR A	TEFLON	NONE	1
01	BODY	BRASS	GOLD	1
NO	DESCRIPTION	MATERIAL	FINISH	Q'TY

TITLE		DRAWN BY: Kelly		2024/03/08	
SMA(F) st PCB crimp for 1.13, height 11.8mm		CHK'D BY: Una		2024/03/08	
DWG NO. C02BI31113015		CUST. P/N: N/A		DWG NO: N/A	
SHEET 1 of 1		Unit: mm		DA2401180013	
GENERAL TOLERANCES		ANGLES		REV. 1.10	
.X ±0.2		.XX ±0.2		.XXX ±0.2	
ANGLES N/A					

