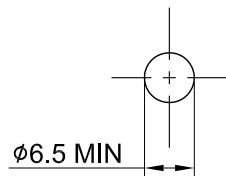
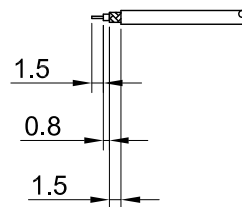


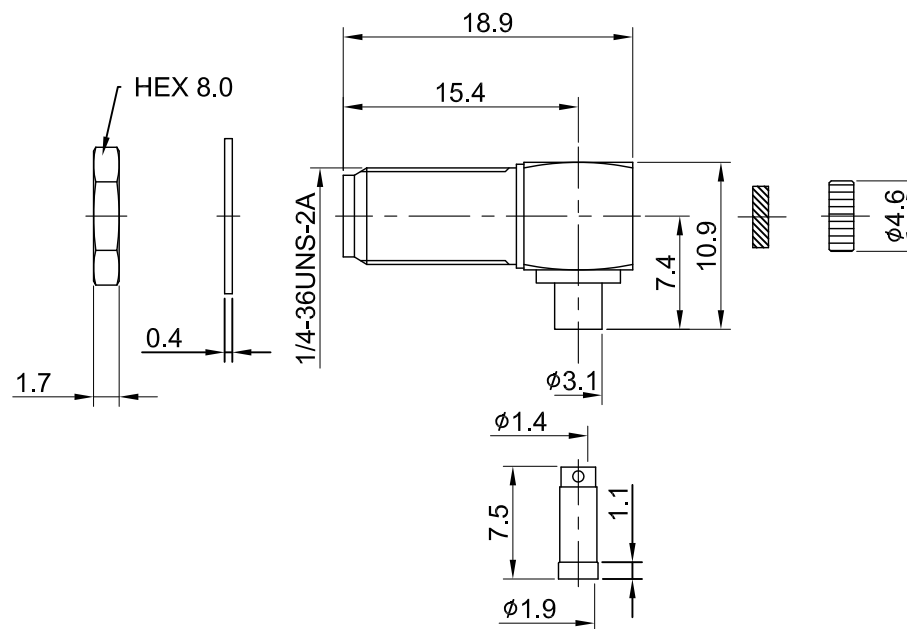
REV	DESCRIPTION	DATE
3.00	CHG STRIP DIM 1.5/0.8/1.5 W. 1.5/3.4/1.5, CHG DIM 10.9/7.4 W. 12.0/8.5, ADD DIM 15.4/1.1/0.4, TAKE OFF DIM 11.4/7.0SQ/4.1/φ10.2	2013/03/12
3.10	NEW DRAWING FRAME	2024/01/17
3.20	ADD RECOMMENDED MOUNTING HOLE	2024/08/07



RECOMMENDED MOUNTING HOLE



RECOMMENDED STRIP LENGTHS



MECHANICAL DATA
 DURABILITY : 500 CYCLES
 TEMPERATURE RANGE : -65°C ~ + 165°C

ELECTRICAL DATA
 FREQUENCY RANGE: DC~6GHz
 IMPEDANCE : 50Ω
 VSWR : 1.5 MAX.
 WORKING VOLTAGE : AC 170V
 WITHSTANDING VOLTAGE : AC 500V
 INSULATION RESISTANCE : 5000 MΩ MIN

08	INSULATOR B	TEFLON	NONE	1	TITLE SMA(F) bh. ra. crimp type for RG178																
07	SLEEVE	BRASS	NICKEL	1																	
06	NUT	BRASS	GOLD	1	DWG NO. C02BS31178017																
05	WASHER	BRASS	GOLD	1																	
04	CAP	BRASS	GOLD	1	CUST. P/N: N/A DWG NO: N/A																
03	CENTER PIN	Be.Cu	GOLD	1																	
02	INSULATOR A	TEFLON	NONE	1	<table border="0"> <tr> <td>GENERAL TOLERANCES</td> <td>DRAWN BY: Kelly</td> <td>2024/08/07</td> </tr> <tr> <td>.X ±0.2</td> <td>CHK'D BY: Eileen</td> <td>2024/08/07</td> </tr> <tr> <td>.XX ±0.2</td> <td></td> <td></td> </tr> <tr> <td>.XXX ±0.2</td> <td></td> <td></td> </tr> <tr> <td>ANGLES N/A</td> <td></td> <td></td> </tr> </table>		GENERAL TOLERANCES	DRAWN BY: Kelly	2024/08/07	.X ±0.2	CHK'D BY: Eileen	2024/08/07	.XX ±0.2			.XXX ±0.2			ANGLES N/A		
GENERAL TOLERANCES	DRAWN BY: Kelly	2024/08/07																			
.X ±0.2	CHK'D BY: Eileen	2024/08/07																			
.XX ±0.2																					
.XXX ±0.2																					
ANGLES N/A																					
01	BODY	BRASS	GOLD	1																	
NO	DESCRIPTION	MATERIAL	FINISH	Q'TY			SHEET 1 of 1	Unit: mm													



REV. 3.20
 DA2408070015