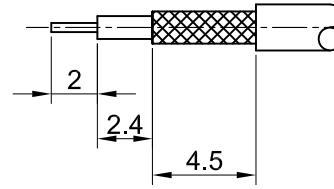
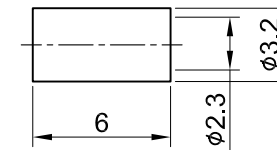
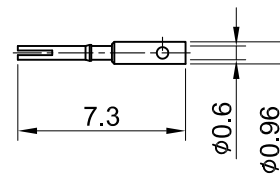
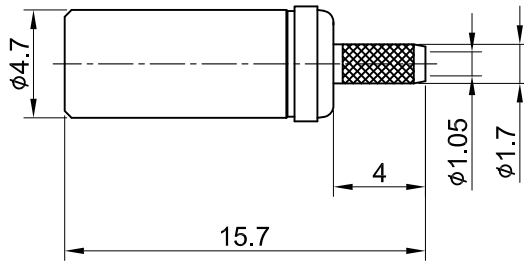


REV	DESCRIPTION	DATE
1.00	INITIAL DESIGN	2011/03/18
1.10	NEW DRAWING FRAME	2024/07/09



RECOMMENDED STRIP LENGTHS



MECHANICAL DATA
 DURABILITY : 500 CYCLES
 TEMPERATURE RANGE : -65°C ~ + 165°C

ELECTRICAL DATA
 FREQUENCY RANGE: DC~4GHz
 IMPEDANCE : 50Ω
 VSWR : 1.5 MAX.
 WORKING VOLTAGE : AC 175V
 WITHSTANDING VOLTAGE : AC 500V
 INSULATION RESISTANCE : 1000 MΩ MIN

06	FERRULE	BRASS	GOLD	1
05	CENTER PIN	Be.Cu	GOLD	1
04	CABLE BODY	BRASS	GOLD	1
03	SHELL	BRASS	GOLD	1
02	INSULATOR	TEFLON	NONE	1
01	BODY	P.BRONZE	GOLD	1
NO	DESCRIPTION	MATERIAL	FINISH	Q'TY

TITLE		DRAWN BY: Kelly		2024/07/09	
SSMB(M) st. for RG178		CHK'D BY: Chilli		2024/07/09	
DWG NO. C11AA3F178002		CUST. P/N: N/A		DWG NO: N/A	
SHEET 1 of 1		Unit: mm		DA2407090013	
GENERAL TOLERANCES		DRAWN BY: Kelly		2024/07/09	
.X ±0.2		CHK'D BY: Chilli		2024/07/09	
.XX ±0.2		REVISION		1.10	
.XXX ±0.2		DA2407090013		1.10	
ANGLES N/A					

