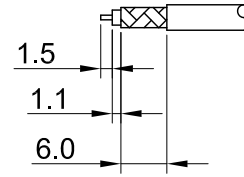
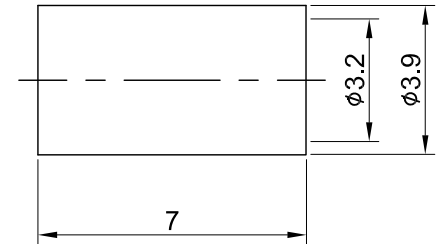
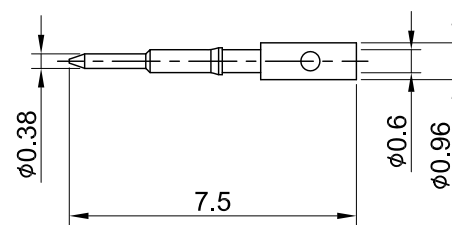
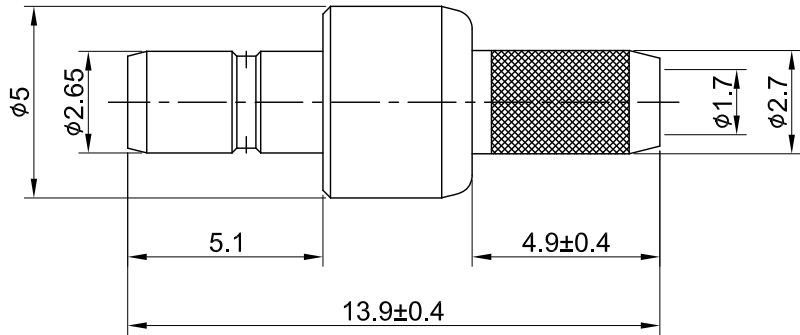


REV	DESCRIPTION	DATE
2.00	NEW DRAWING FRAME	2023/06/06
2.01	CORRECT INSULATION RESISTANCE	2024/01/24



RECOMMENDED STRIP LENGTHS



MECHANICAL DATA  
TEMPERATURE RANGE : -65°C ~ + 165°C

DIELECTRICAL DATA  
FREQUENCY RANGE: DC~4GHz  
IMPEDANCE : 50Ω  
VSWR : 1.5 MAX.  
WORKING VOLTAGE : AC 175V  
WITHSTANDING VOLTAGE : AC 500V  
INSULATION RESISTANCE : 1000 MΩ MIN

05	BODY	BRASS	GOLD	1
04	INSULATOR	TEFLON	NONE	1
03	BODY	BRASS	GOLD	1
02	CENTER PIN	BRASS	GOLD	1
01	FERRULE	BRASS	GOLD	1
NO	DESCRIPTION	MATERIAL	FINISH	Q'TY

TITLE		DRAWN BY:		DATE	
SSMB(F) st. crimp for RG174		Lottie	2024/01/24		
DWG NO. C12AA3F174005		CHK'D BY:	Dora	2024/01/24	
CUST. P/N: N/A DWG NO: N/A				REV. 2.01	
SHEET 1 of 1 Unit: mm		DA2401030023			



GENERAL TOLERANCES	
.X	±0.2
.XX	±0.2
.XXX	±0.2
ANGLES	N/A