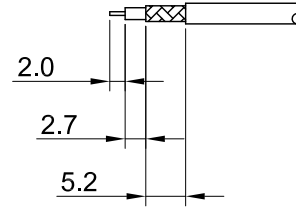
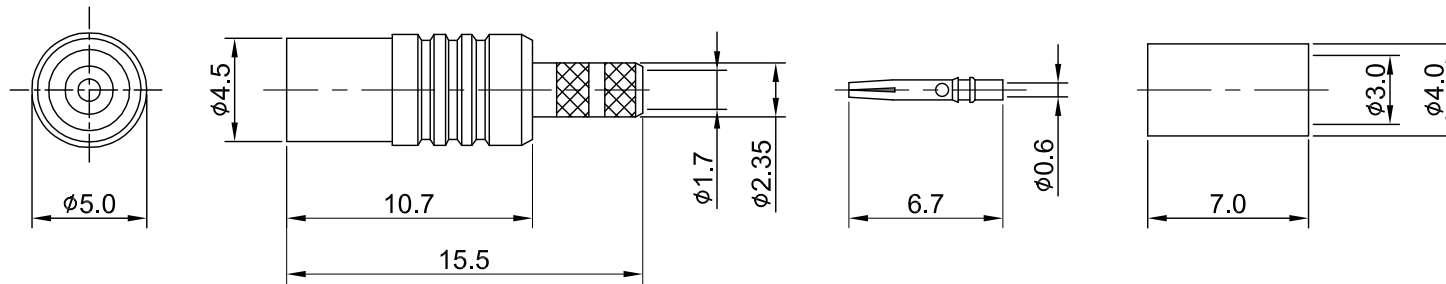


| REV  | DESCRIPTION                   | DATE       |
|------|-------------------------------|------------|
| 1.30 | NEW DRAWING FRAME             | 2023/06/20 |
| 1.31 | CORRECT INSULATION RESISTANCE | 2024/05/16 |



RECOMMENDED STRIP LENGTHS



MECHANICAL DATA  
 DURABILITY : 500 CYCLES  
 TEMPERATURE RANGE : -65°C ~ + 165°C

ELECTRICAL DATA  
 FREQUENCY RANGE: DC~6GHz  
 IMPEDANCE : 50Ω  
 VSWR : 1.3 MAX.  
 WORKING VOLTAGE : AC 375V  
 WITHSTANDING VOLTAGE : AC 750V  
 INSULATION RESISTANCE : 5000 MΩ MIN

|    |             |          |        |      |
|----|-------------|----------|--------|------|
| 04 | FERRULE     | BRASS    | GOLD   | 1    |
| 03 | INSULATOR   | TEFLON   | NONE   | 1    |
| 02 | PIN         | Be.Cu    | GOLD   | 1    |
| 01 | BODY        | BRASS    | GOLD   | 1    |
| NO | DESCRIPTION | MATERIAL | FINISH | Q'TY |

| TITLE                            |  | DRAWN BY:  |            | DATE         |  |
|----------------------------------|--|--|------------|--------------|--|
| MCX(F) st. crimp type for RG174  |  | Lottie   | 2024/05/16 |              |  |
| DWG NO.<br>C08AA31174008         |  | CHK'D BY:  | Kelly      | 2024/05/16   |  |
| CUST.<br>P/N: N/A<br>DWG NO: N/A |  |  |            |              |  |
| SHEET 1 of 1                     |  | GENERAL TOLERANCES<br>.X ±0.2<br>.XX ±0.2<br>.XXX ±0.2<br>ANGLES N/A |            | REV.<br>1.31 |  |
| Unit: mm                         |  | DA2401160022   |            |              |  |