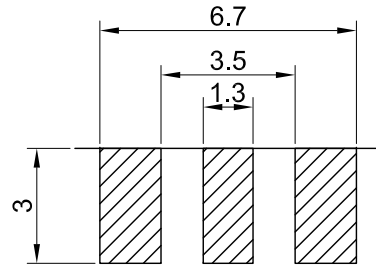
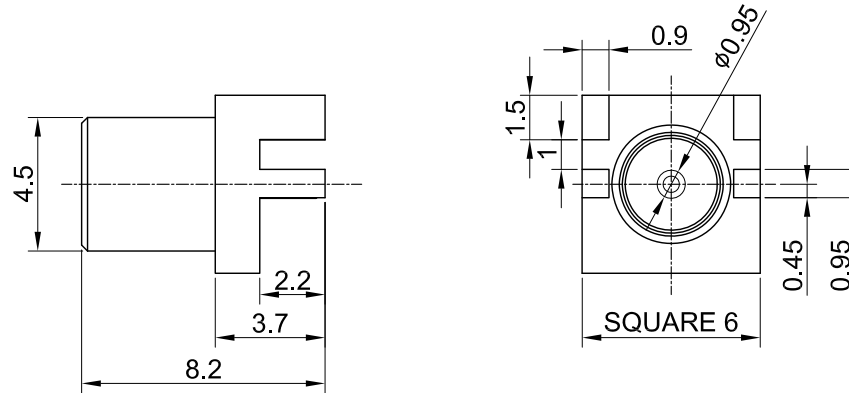


REV	DESCRIPTION	DATE
1.10	NEW DRAWING FRAME	2023/07/03
1.20	CORRECT INSULATION RESISTANCE	2023/11/16



RECOMMENDED
PCB LAYOUT



MECHANICAL DATA
 DURABILITY : 100 CYCLES
 TEMPERATURE RANGE : -65°C ~ + 165°C

ELECTRICAL DATA
 FREQUENCY RANGE: DC~6GHZ
 IMPEDANCE : 50Ω
 VSWR : 1.3 MAX.
 WORKING VOLTAGE : AC 335V
 WITHSTANDING VOLTAGE : AC 500V
 INSULATION RESISTANCE : 1000 MΩ MIN

TITLE MCX(F) st. edge mount, 1.0mm gap for PCB			
DWG NO. C08AJ3F19A			
CUST. P/N: N/A DWG NO: N/A		GENERAL TOLERANCES .X ±0.2 .XX ±0.2 .XXX ±0.2 ANGLES N/A	DRAWN BY: Lottie 2023/11/16 CHK'D BY: Dora 2023/11/16 REV. 1.20
SHEET 1 of 1	Unit: mm	DA2311140008	

NO	DESCRIPTION	MATERIAL	FINISH	Q'TY
03	CENTER PIN	P.BRONZE	GOLD	1
02	INSULATOR	TEFLON	NONE	1
01	BODY	BRASS	GOLD	1