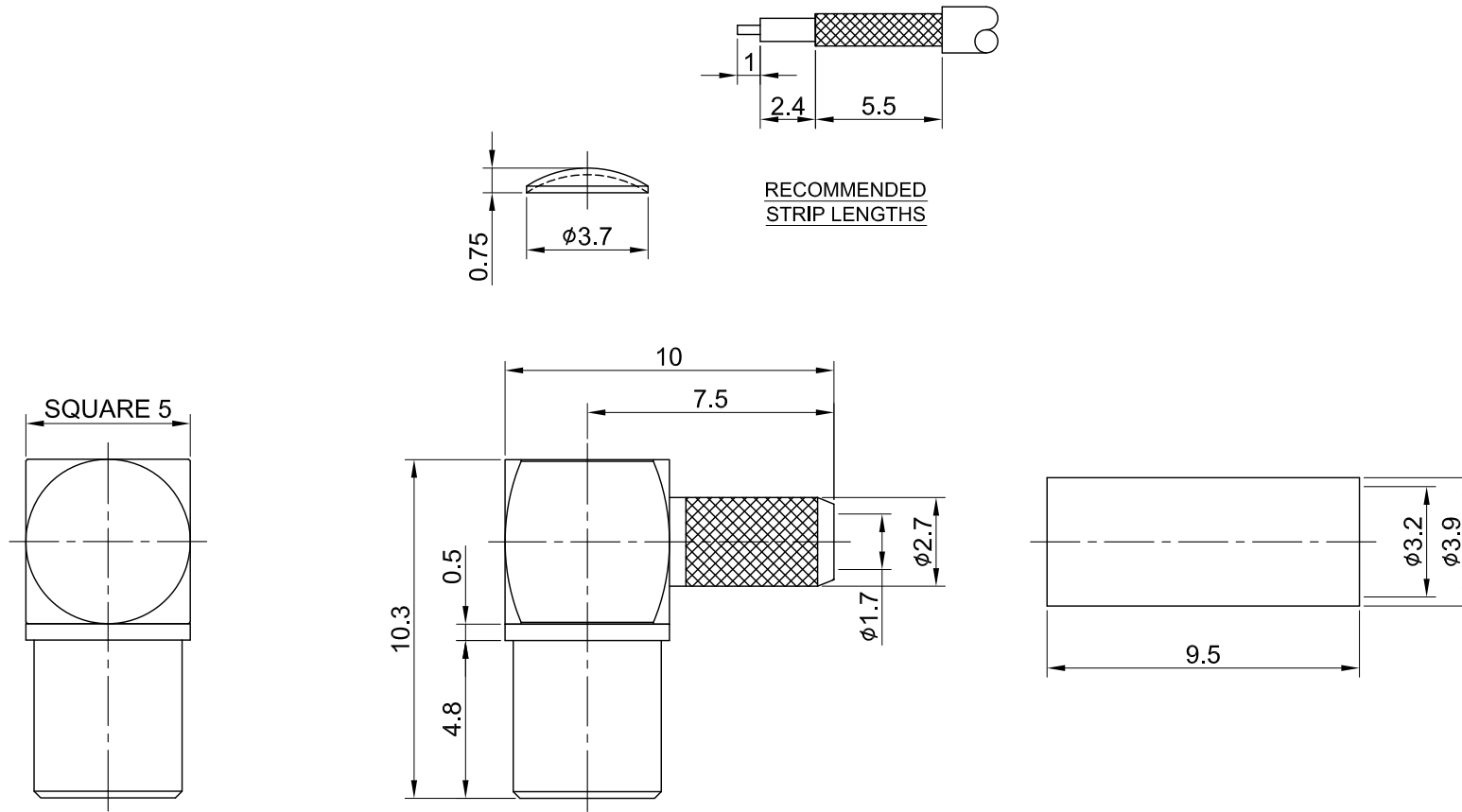


REV	DESCRIPTION	DATE
1.10	INITIAL DESIGN	2023/07/03
1.20	CORRECT INSULATION RESISTANCE	2023/11/21



MECHANICAL DATA
 DURABILITY : 100 CYCLES
 TEMPERATURE RANGE : -65°C ~ + 165°C

ELECTRICAL DATA
 FREQUENCY RANGE: DC~6GHz
 IMPEDANCE : 50Ω
 VSWR : 1.5 MAX.
 WORKING VOLTAGE : AC 335V
 WITHSTANDING VOLTAGE : AC 500V
 INSULATION RESISTANCE : 1000 MΩ MIN

06	FERRULE	BRASS	GOLD	1
05	BODY	BRASS	GOLD	1
04	INSULATOR	TEFLON	NONE	1
03	CENTER PIN	P.BRONZE	GOLD	1
02	SQ BODY	BRASS	GOLD	1
01	COVER	BRASS	GOLD	1
NO	DESCRIPTION	MATERIAL	FINISH	Q'TY

TITLE		DRAWN BY:		CHK'D BY:		REV.	
MCX(F)ra. crimp for RG174		Lottie	2023/11/21	Dora	2023/11/21	1.20	
DWG NO. C08BA3F174009		GENERAL TOLERANCES		DA2311160020			
CUST. P/N: N/A DWG NO: N/A		.X ±0.2	.XX ±0.2	ANGLES N/A			
SHEET 1 of 1	Unit: mm						

