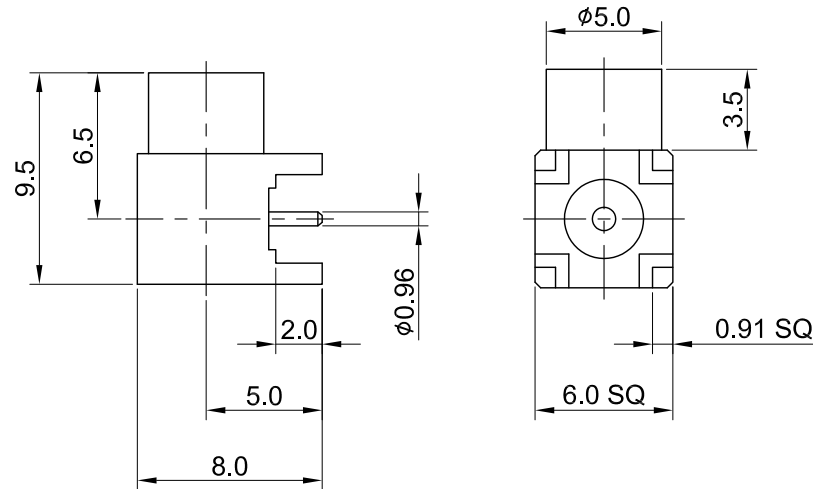
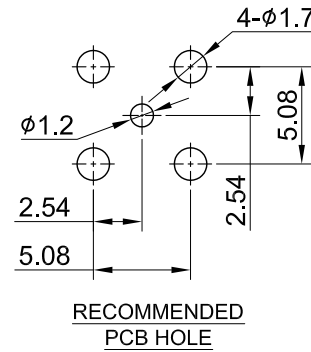


REV	DESCRIPTION	DATE
1.10	NEW DRAWING FRAME	2023/07/03
1.20	CORRECT INSULATION RESISTANCE	2023/11/20



MECHANICAL DATA
 DURABILITY : 500 CYCLES
 TEMPERATURE RANGE : -65°C ~ + 165°C

ELECTRICAL DATA
 FREQUENCY RANGE: DC~6GHZ
 IMPEDANCE : 50Ω
 VSWR : 1.5 MAX.
 WORKING VOLTAGE : AC 500V
 WITHSTANDING VOLTAGE : AC 1000V
 INSULATION RESISTANCE : 1000 MΩ MIN

03	CENTER PIN	Be.Cu	GOLD	1
02	INSULATOR	TEFLON	NONE	1
01	BODY	BRASS	GOLD	1
NO	DESCRIPTION	MATERIAL	FINISH	Q'TY

TITLE		DRAWN BY: Kelly		2023/11/20	
MCX(F) ra., PCB type		CHK'D BY: Eileen		2023/11/20	
DWG NO. C08BN31P01006		REVISION		REV.	
CUST. P/N: N/A DWG NO: N/A		GENERAL TOLERANCES		DA2311200004	
SHEET 1 of 1		Unit: mm		1.20	



.X	±0.2
.XX	±0.2
.XXX	±0.2
ANGLES	N/A