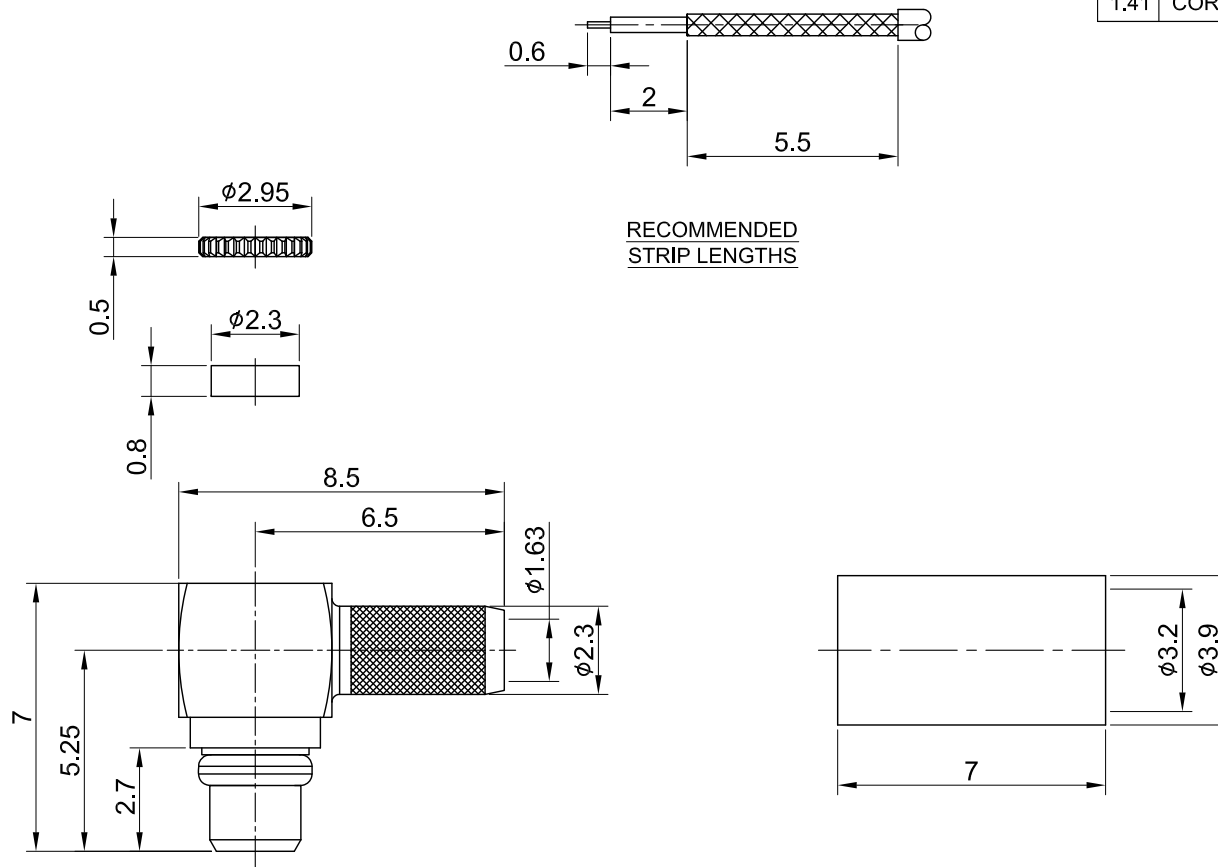


REV	DESCRIPTION	DATE
1.40	NEW DRAWING FRAME	2023/07/14
1.41	CORRECT INSULATION RESISTANCE	2023/10/26



MECHANICAL DATA
TEMPERATURE RANGE : -40°C ~ + 85°C

ELECTRICAL DATA
FREQUENCY RANGE: DC~6GHz
IMPEDANCE : 50Ω
VSWR : 1.5 MAX.
WORKING VOLTAGE : AC 170V
WITHSTANDING VOLTAGE : AC 500V
INSULATION RESISTANCE : 1000 MΩ MIN

07	FERRULE	BRASS	GOLD	1
06	PIN	BRASS	GOLD	1
05	C-RING	Be.Cu	GOLD	1
04	INSULATOR A	TEFLON	NONE	1
03	BODY	BRASS	GOLD	1
02	INSULATOR B	POM	NONE	1
01	COVER	BRASS	GOLD	1
NO	DESCRIPTION	MATERIAL	FINISH	Q'TY

TITLE		DRAWN BY:		CHK'D BY:		REVISION	
MMCX(M) ra. crimp type for RD316		Kelly		Eileen		2023/10/26	
DWG NO. C05BA3F316D01		DRAWN BY:		CHK'D BY:		REV.	
CUST. P/N: N/A		DRAWN BY:		CHK'D BY:		REV.	
DWG NO: N/A		DRAWN BY:		CHK'D BY:		REV.	
SHEET 1 of 1		Unit: mm		DA2310260011		1.41	



GENERAL TOLERANCES	ANGLES
.X ±0.2	
.XX ±0.2	
.XXX ±0.2	
ANGLES N/A	