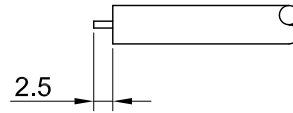
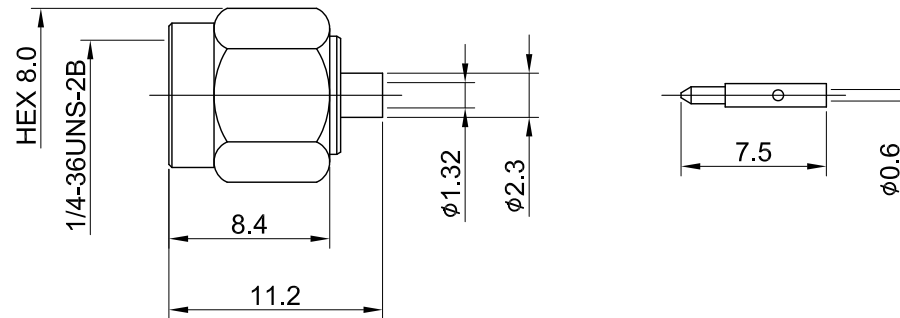


REV	DESCRIPTION	DATE
1.10	CHG 2.5 W. 2.0	2023/07/04
1.11	CORRECT INSULATION RESISTANCE	2023/12/18



RECOMMENDED STRIP LENGTHS



MECHANICAL DATA  
TEMPERATURE RANGE : -65°C ~ + 165°C

ELECTRICAL DATA  
FREQUENCY RANGE: DC~6GHz  
IMPEDANCE : 50Ω  
VSWR : 1.3 MAX.  
WORKING VOLTAGE : AC 500V  
WITHSTANDING VOLTAGE : AC 1000V  
INSULATION RESISTANCE : 5000 MΩ MIN

TITLE	
SMA(M) st. solder type for .047	

05	RING	Be.Cu	NONE	1	DWG NO. C01AA31047004B		GENERAL TOLERANCES .X ±0.2 .XX ±0.2 .XXX ±0.2 ANGLES N/A	DRAWN BY: Lottie	2023/12/18
04	GASKET	SILICONE RUBBER	NONE	1				CHK'D BY: Una	2023/12/18
03	INSULATOR	TEFLON	NONE	1	CUST. P/N: N/A DWG NO: N/A		REV.		
02	PIN	BRASS	GOLD	1					
01	SHELL	BRASS	GOLD	1					
NO	DESCRIPTION	MATERIAL	FINISH	Q'TY	SHEET 1 of 1	Unit: mm	DA2312140001	1.11	