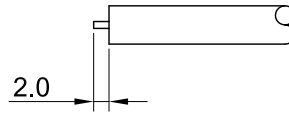
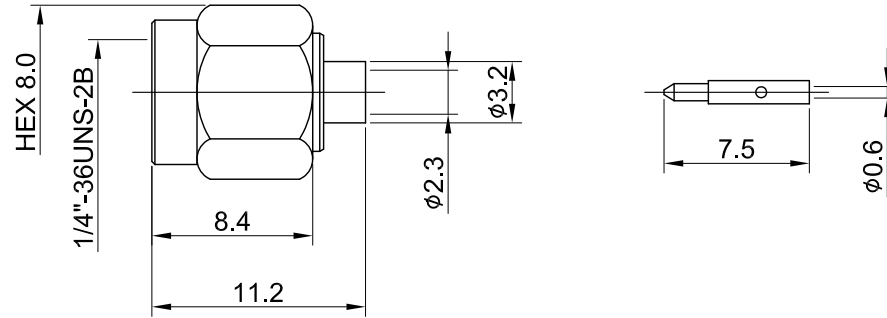


REV	DESCRIPTION	DATE
1.10	NEW DRAWING FRAME	2023/06/20
1.20	CORRECT INSULATION RESISTANCE UNIT	2023/11/30



RECOMMENDED STRIP LENGTHS



MECHANICAL DATA  
TEMPERATURE RANGE : -65°C ~ + 165°C

ELECTRICAL DATA  
FREQUENCY RANGE: DC~6GHz  
IMPEDANCE : 50Ω  
VSWR : 1.3 MAX.  
WORKING VOLTAGE : AC 375V  
WITHSTANDING VOLTAGE : AC 750V  
INSULATION RESISTANCE : 5000 MΩ MIN

TITLE	
SMA(M) st. solder for RG405/0.085	

05	RING	Be.Cu	GOLD	1
04	GASKET	SILICONE RUBBER	NONE	1
03	INSULATOR	TEFLON	NONE	1
02	PIN	BRASS	GOLD	1
01	BODY	BRASS	GOLD	1
NO	DESCRIPTION	MATERIAL	FINISH	Q'TY

DWG NO. C01AA31085004B	
CUST. P/N: N/A DWG NO: N/A	
SHEET 1 of 1	Unit: mm

GENERAL TOLERANCES	DRAWN BY: Kelly	2023/11/30
.X ±0.2	CHK'D BY: Eileen	2023/11/30
.XX ±0.2		
.XXX ±0.2	REV. 1.20	
ANGLES N/A	DA2311300005	