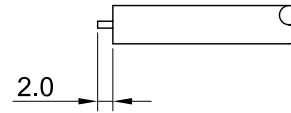
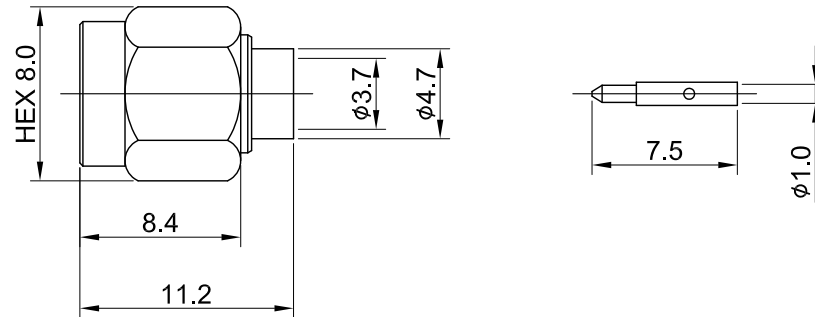


REV	DESCRIPTION	DATE
1.10	NEW DRAWING FRAME	2023/07/25
1.11	CORRECT INSULATION RESISTANCE UNIT	2023/12/14



RECOMMENDED  
STRIP LENGTHS



MECHANICAL DATA  
TEMPERATURE RANGE : -65°C ~ + 165°C

ELECTRICAL DATA  
FREQUENCY RANGE: DC~6GHz  
IMPEDANCE : 50Ω  
VSWR : 1.3 MAX.  
WORKING VOLTAGE : AC 500V  
WITHSTANDING VOLTAGE : AC 1000V  
INSULATION RESISTANCE : 5000 MΩ MIN

05	RING	Be.Cu	NONE	1
04	GASKET	SILICONE RUBBER	NONE	1
03	CENTER PIN	BRASS	GOLD	1
02	INSULATOR	TEFLON	NONE	1
01	BODY	BRASS	GOLD	1
NO	DESCRIPTION	MATERIAL	FINISH	Q'TY

TITLE		DRAWN BY:		CHK'D BY:		REV.	
SMA(M) st. solder for semi rigid RG402		Kelly		Chili		1.11	
DWG NO. C01AA31141004B		2023/12/14		2023/12/14		DA2312130034	
CUST. P/N: N/A DWG NO: N/A		GENERAL TOLERANCES .X ±0.2 .XX ±0.2 .XXX ±0.2 ANGLES N/A		DRAWN BY: Kelly CHK'D BY: Chili		REV. 1.11	
SHEET	1 of 1	Unit:	mm				

