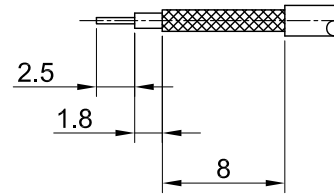
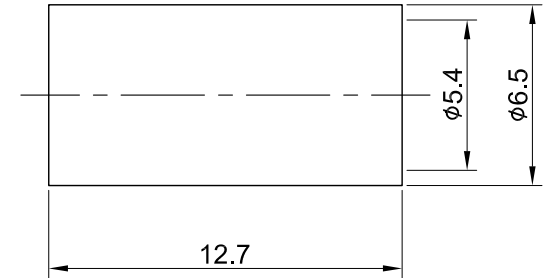
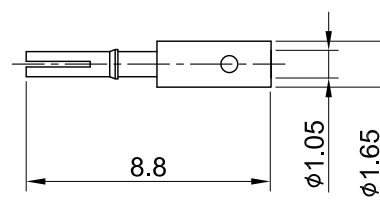
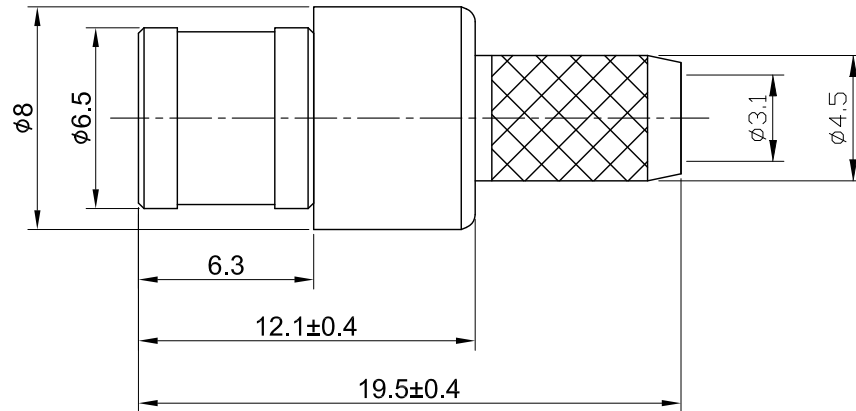


REV	DESCRIPTION	DATE
2.20	NEW DRAWING FRAME	2023/08/03
2.30	CORRECT INSULATION RESISTANCE	2023/11/06



RECOMMENDED STRIP LENGTHS



MECHANICAL DATA
 DURABILITY : 500 CYCLES
 TEMPERATURE RANGE : -65°C ~ + 165°C

ELECTRICAL DATA
 FREQUENCY RANGE: DC~4GHz
 IMPEDANCE : 50Ω
 VSWR : 1.5 MAX.
 WORKING VOLTAGE : AC 335V
 WITHSTANDING VOLTAGE : AC 750V
 INSULATION RESISTANCE : 1000 MΩ MIN

NO	DESCRIPTION	MATERIAL	FINISH	Q'TY
07	FERRULE	BRASS	GOLD	1
06	PIN	Be.Cu	GOLD	1
05	BODY B	BRASS	GOLD	1
04	INSULATOR	TEFLON	NONE	1
03	BODY A	BRASS	GOLD	1
02	SHELL	BRASS	GOLD	1
01	INNER RETAINING RING	Be.Cu	GOLD	1

TITLE		DRAWN BY:		CHK'D BY:		REVISION	
SMB(M) st. crimp for RG58		Lottie	2023/11/06	Kana	2023/11/06	REV.	2.30
DWG NO. C03AA3F058A03		DRAWN BY:		CHK'D BY:		REVISION	
CUST. P/N: N/A DWG NO: N/A		DRAWN BY:		CHK'D BY:		REVISION	
SHEET 1 of 1		Unit: mm		DA2311010013		2.30	



GENERAL TOLERANCES	ANGLES
.X ±0.2	N/A
.XX ±0.2	N/A
.XXX ±0.2	N/A