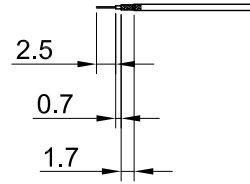
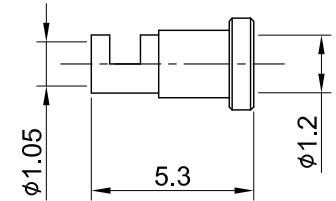
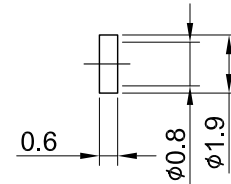
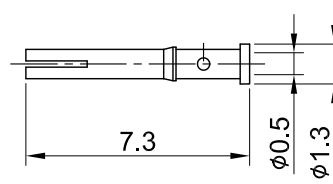
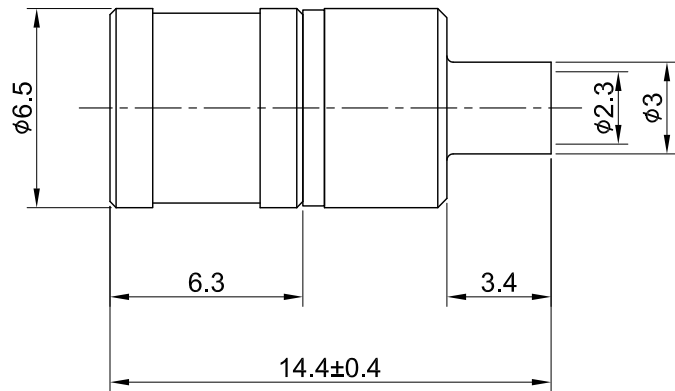


REV	DESCRIPTION	DATE
1.10	NEW DRAWING FRAME	2023/08/21
1.11	UPDATE INSULATION RESISTANCE	2023/10/03



RECOMMENDED STRIP LENGTHS



MECHANICAL DATA
 DURABILITY : 500 CYCLES
 TEMPERATURE RANGE : -65°C ~ + 165°C

ELECTRICAL DATA
 FREQUENCY RANGE: DC~4GHz
 IMPEDANCE : 50Ω
 VSWR : 1.5 MAX.
 WORKING VOLTAGE : AC 335V
 WITHSTANDING VOLTAGE : AC 750V
 INSULATION RESISTANCE : 1000 MΩ MIN

08	FERRULE	BRASS	GOLD	1	TITLE SMB(M)st.crimp for 1.13
07	INSULATOR B	TEFLON	NONE	1	
06	CENTER PIN	Be. Cu	GOLD	1	
05	BODY B	BRASS	GOLD	1	DWG NO. C03AA3F113003D
04	INSULATOR A	TEFLON	NONE	1	CUST. P/N: N/A DWG NO: N/A
03	BODY A	BRASS	GOLD	1	
02	SHELL	BRASS	GOLD	1	
01	INNER RETAINING RING	Be.Cu	GOLD	1	SHEET 1 of 1 Unit: mm
NO	DESCRIPTION	MATERIAL	FINISH	Q'TY	



GENERAL TOLERANCES

.X	±0.2
.XX	±0.2
.XXX	±0.2
ANGLES	N/A

DRAWN BY: Kelly 2023/10/03

CHK'D BY: David 2023/10/03

REV. 1.11