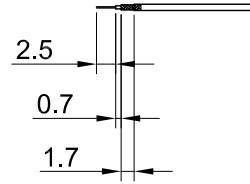
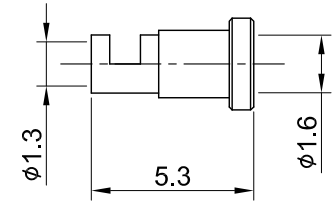
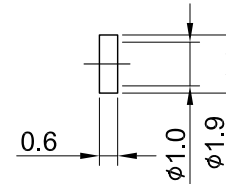
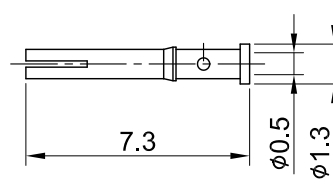
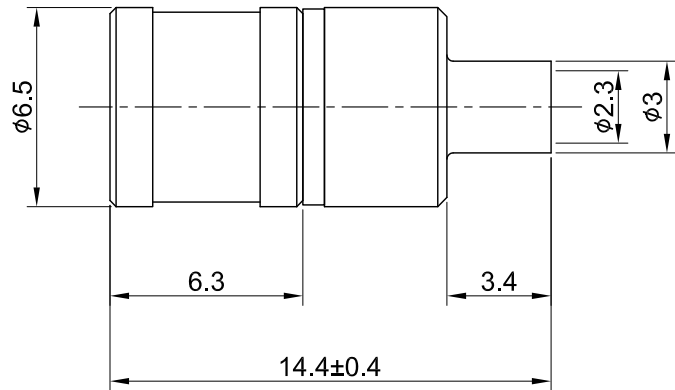


REV	DESCRIPTION	DATE
1.10	NEW DRAWING FRAME	2023/08/21
1.11	UPDATE INSULATION RESISTANCE	2023/10/03



RECOMMENDED STRIP LENGTHS



MECHANICAL DATA  
 DURABILITY : 500 CYCLES  
 TEMPERATURE RANGE : -65°C ~ + 165°C

ELECTRICAL DATA  
 FREQUENCY RANGE: DC~4GHz  
 IMPEDANCE : 50Ω  
 VSWR : 1.5 MAX.  
 WORKING VOLTAGE : AC 335V  
 WITHSTANDING VOLTAGE : AC 750V  
 INSULATION RESISTANCE : 1000 MΩ MIN

08	FERRULE	BRASS	GOLD	1	TITLE SMB(M)st.crimp for 1.37	
07	INSULATOR B	TEFLON	NONE	1		
06	CENTER PIN	Be. Cu	GOLD	1	DWG NO. C03AA3F137003D	
05	BODY B	BRASS	GOLD	1		
04	INSULATOR A	TEFLON	NONE	1	CUST. P/N: N/A DWG NO: N/A	
03	BODY A	BRASS	GOLD	1		
02	SHELL	BRASS	GOLD	1	GENERAL TOLERANCES .X ±0.2 .XX ±0.2 .XXX ±0.2 ANGLES N/A	
01	INNER RETAINING RING	Be.Cu	GOLD	1		
NO	DESCRIPTION	MATERIAL	FINISH	Q'TY	SHEET 1 of 1	Unit: mm
					DRAWN BY: Kelly 2023/10/03	
					CHK'D BY: David 2023/10/03	
					DA2310030003	REV. 1.11

