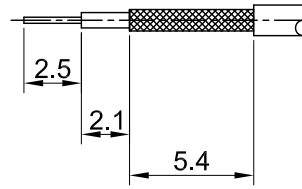
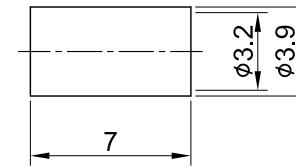
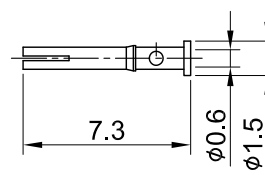
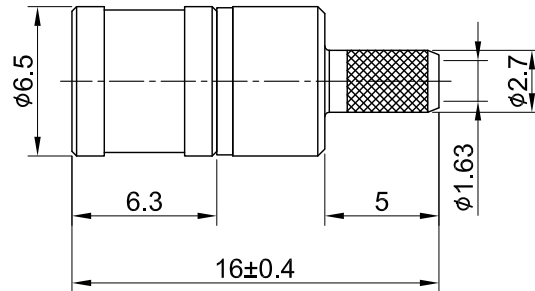


REV	DESCRIPTION	DATE
1.30	NEW DRAWING FRAME	2023/08/21
1.40	CORRECT INSULATION RESISTANCE	2023/11/06



RECOMMENDED  
STRIP LENGTHS



MECHANICAL DATA  
DURABILITY : 500 CYCLES  
TEMPERATURE RANGE : -65°C ~ + 165°C

ELECTRICAL DATA  
FREQUENCY RANGE: DC~4GHz  
IMPEDANCE : 50Ω  
VSWR : 1.3 MAX.  
WORKING VOLTAGE : AC 335V  
WITHSTANDING VOLTAGE : AC 750V  
INSULATION RESISTANCE : 1000 MΩ MIN

07	FERRULE	BRASS	GOLD	1
06	CENTER PIN	Be.Cu	GOLD	1
05	BODY B	BRASS	GOLD	1
04	INSULATOR	TEFLON	NONE	1
03	BODY A	BRASS	GOLD	1
02	SHELL	BRASS	GOLD	1
01	INNER RETANING RING	Be.Cu	GOLD	1
NO	DESCRIPTION	MATERIAL	FINISH	Q'TY

TITLE

SMB(M) st. crimp for RG174

DWG NO.

C03AA3F174003

CUST.

P/N: N/A

DWG NO: N/A

SHEET 1 of 1

Unit: mm



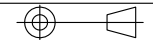
Wellshow

GENERAL  
TOLERANCES

.X ±0.2  
.XX ±0.2  
.XXX ±0.2  
ANGLES N/A

DRAWN BY: Lottie 2023/11/06

CHK'D BY: Kana 2023/11/06



REV.

DA2311010017

1.40