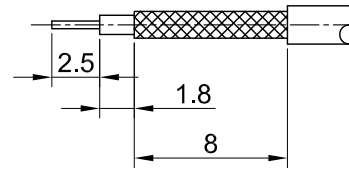
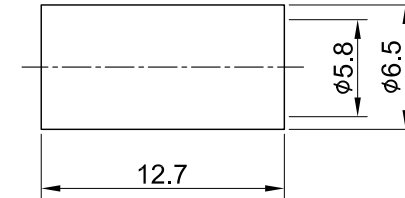
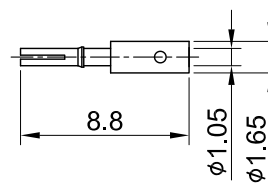
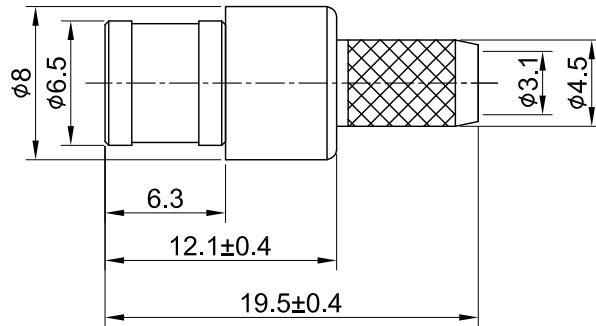


REV	DESCRIPTION	DATE
1.00	INITIAL DESIGN	2023/04/13
1.10	CHG $\phi 1.05$ W. $\phi 1.0$	2023/05/24
1.11	UPDATE WITHSTANDING VOLTAGE	2023/05/24
1.20	CORRECT INSULATION RESISTANCE	2023/11/06



RECOMMENDED STRIP LENGTHS



MECHANICAL DATA
 DURABILITY : 500 CYCLES
 TEMPERATURE RANGE : -65°C ~ + 165°C

DIELECTRICAL DATA
 FREQUENCY RANGE: DC~4GHz
 IMPEDANCE : 50Ω
 VSWR : 1.5 MAX.
 WORKING VOLTAGE : AC 335V
 WITHSTANDING VOLTAGE : AC 750V
 INSULATION RESISTANCE : 1000 MΩ MIN

07	FERRULE	BRASS	GOLD	1
06	BODY B	BRASS	GOLD	1
05	CENTER PIN	Be.Cu	GOLD	1
04	INSULATOR	TEFLON	NONE	1
03	BODY A	BRASS	GOLD	1
02	SHELL	BRASS	GOLD	1
01	INNER RETAINING RING	Be.Cu	GOLD	1
NO	DESCRIPTION	MATERIAL	FINISH	Q'TY

TITLE		DRAWN BY:		CHK'D BY:		REVISION	
SMB(M) st. crimp type for RG223, RG142, RG400		Lottie	2023/11/06	Kana	2023/11/06	REV. 1.20	
DWG NO. C03AA3F223003		GENERAL TOLERANCES		DA2311010020			
CUST. P/N: N/A DWG NO: N/A		.X ±0.2	.XX ±0.2	ANGLES N/A			
SHEET 1 of 1	Unit: mm						

