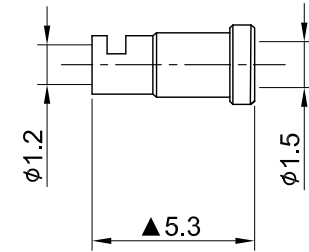
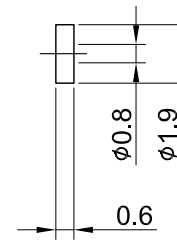
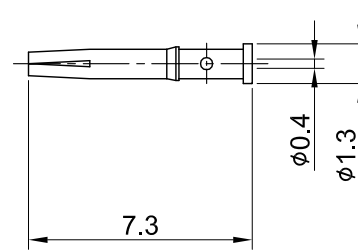
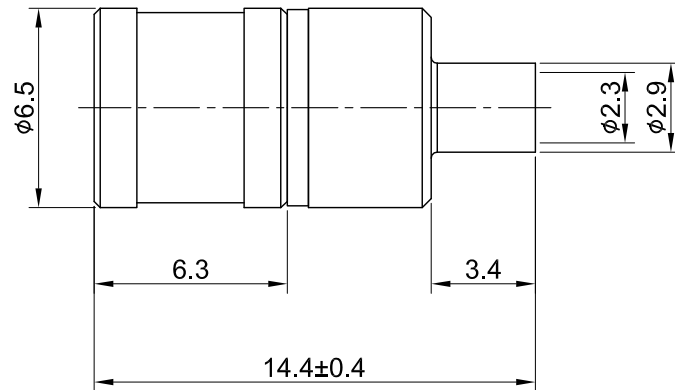
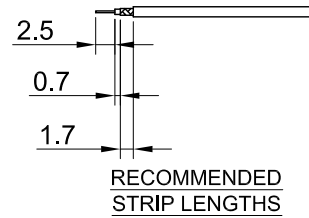


REV	DESCRIPTION	DATE
1.10	NEW DRAWING FRAME	2023/08/22
1.20	CORRECT DURABILITY & INSULATION RESISTANCE. ADD DIMS.3	2023/11/14



MECHANICAL DATA  
 DURABILITY : 500 CYCLES  
 TEMPERATURE RANGE : -65°C ~ + 165°C

ELECTRICAL DATA  
 FREQUENCY RANGE: DC~3GHZ  
 IMPEDANCE : 75Ω  
 VSWR : 1.5 MAX.  
 WORKING VOLTAGE : AC 335V  
 WITHSTANDING VOLTAGE : AC 750V  
 INSULATION RESISTANCE : 1000 MΩ MIN

08	FERRULE	BRASS	GOLD	1	TITLE SMB(M) st. for 1.32, 75ohm	
07	INSULATOR GASKET	TEFLON	NONE	1		
06	CENTER PIN	Be.Cu	GOLD	1		
05	CABLE BODY	BRASS	GOLD	1	DWG NO. C030A3F132003D	
04	INSULATOR	TEFLON	NONE	1	CUST. P/N: N/A DWG NO: N/A	
03	BODY	BRASS	GOLD	1		
02	SHELL	BRASS	GOLD	1		
01	INNER RETAINING RING	Be.Cu	GOLD	1	SHEET 1 of 1 Unit: mm	
NO	DESCRIPTION	MATERIAL	FINISH	Q'TY		



GENERAL TOLERANCES	DRAWN BY: Lottie	2023/11/14
.X ±0.2	CHK'D BY: Dora	2023/11/14
.XX ±0.2		
.XXX ±0.2		
ANGLES N/A		
	DA2311080023	REV. 1.20