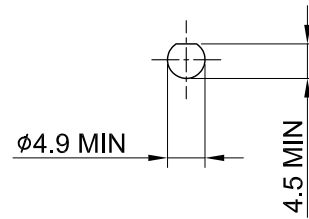
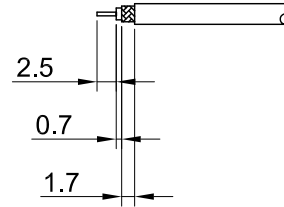


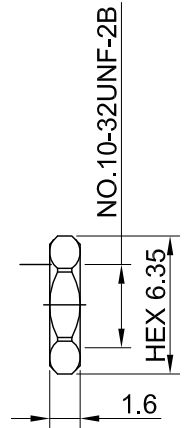
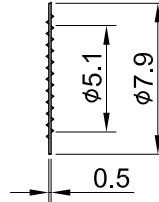
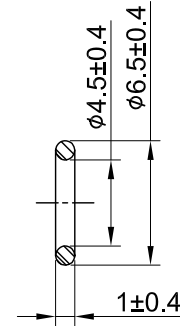
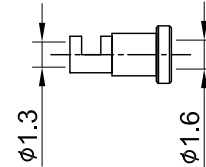
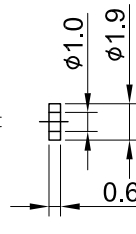
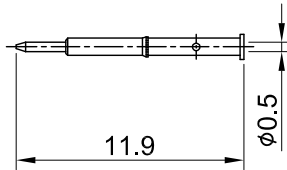
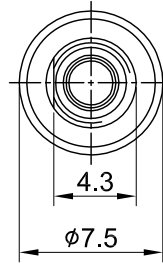
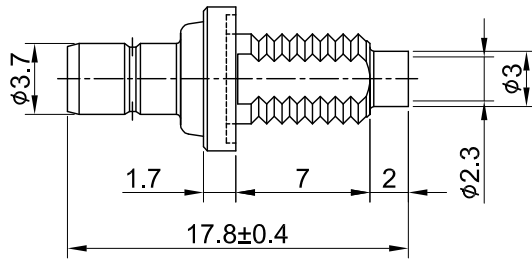
REV	DESCRIPTION	DATE
2.10	NEW DRAWING FRAME	2023/08/03
2.20	CORRECT INSULATION RESISTANCE	2023/11/08



RECOMMENDED MOUNTING HOLE



RECOMMENDED STRIP LENGTHS



MECHANICAL DATA
TEMPERATURE RANGE : -65°C ~ + 165°C

ELECTRICAL DATA
FREQUENCY RANGE: DC~4GHz
IMPEDANCE : 50Ω
VSWR : 1.3 MAX.
WORKING VOLTAGE : AC 335V
WITHSTANDING VOLTAGE : AC 750V
INSULATION RESISTANCE : 1000 MΩ MIN

09	O RING	SILICONE RUBBER	BLACK	1
08	NUT	BRASS	GOLD	1
07	WASHER	BRASS	GOLD	1
06	FERRULE	BRASS	GOLD	1
05	INSULATOR GASKET	TEFLON	NONE	1
04	CENTER PIN	BRASS	GOLD	1
03	BODY B	BRASS	GOLD	1
02	INSULATOR	TEFLON	NONE	1
01	BODY A	BRASS	GOLD	1
NO	DESCRIPTION	MATERIAL	FINISH	Q'TY

TITLE
SMB(F) bh. front mount wOring, thread L7.0, for 1.37mm cable round panel OD7.5

DWG NO.
C04AU3F137026

CUST.
P/N: N/A
DWG NO: N/A

SHEET 1 of 1 Unit: mm



GENERAL TOLERANCES		DRAWN BY: Lottie 2023/11/08	
.X	±0.2	CHK'D BY: Kana 2023/11/08	REV. 2.20
.XX	±0.2		
.XXX	±0.2		
ANGLES	N/A	DA2311060013	