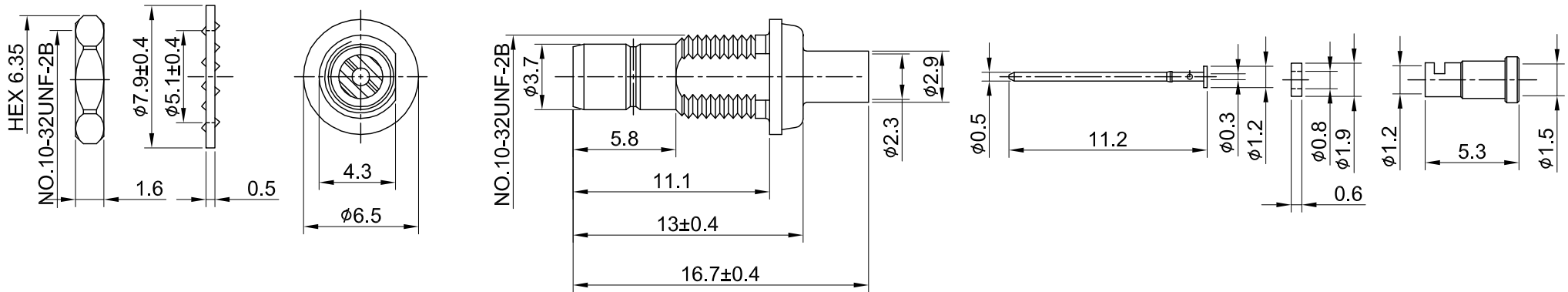
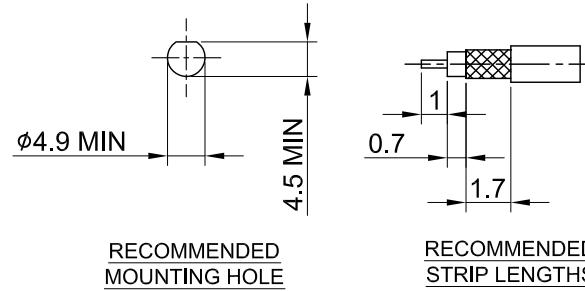


REV	DESCRIPTION	DATE
1.20	NEW DRAWING FRAME	2023/08/22
1.30	CORRECT INSULATION RESISTANCE	2023/11/15



MECHANICAL DATA
TEMPERATURE RANGE : -65°C ~ + 165°C

ELECTRICAL DATA
FREQUENCY RANGE: DC~3GHz
IMPEDANCE : 75Ω
VSWR : 1.5 MAX.
WORKING VOLTAGE : AC 335V
WITHSTANDING VOLTAGE : AC 750V
INSULATION RESISTANCE : 1000 MΩ MIN

08	NUT	BRASS	GOLD	1	TITLE SMB(F)st.bh crimp for 1.32, 75ohms
07	LOCK WASHER	BRASS	GOLD	1	
06	FERRULE	BRASS	GOLD	1	
05	INSULATOR GASKET	TEFLON	NONE	1	DWG NO. C04OB3F132006E
04	CENTER PIN	BRASS	GOLD	1	CUST. P/N: N/A DWG NO: N/A
03	CABLE BODY	BRASS	GOLD	1	
02	BODY	BRASS	GOLD	1	
01	INSULATOR	TEFLON	NONE	1	SHEET 1 of 1 Unit: mm
NO	DESCRIPTION	MATERIAL	FINISH	Q'TY	

GENERAL TOLERANCES

.X ±0.2
.XX ±0.2
.XXX ±0.2
ANGLES N/A

DRAWN BY: Lottie 2023/11/15

CHK'D BY: Kana 2023/11/15

Wellshow

REV.

DA2311130024 1.30