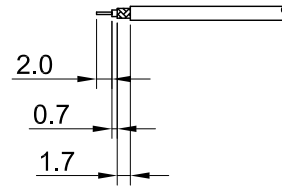
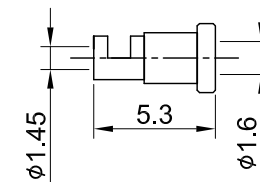
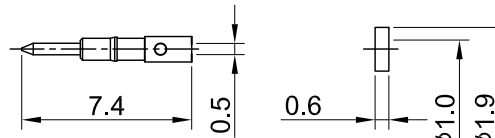
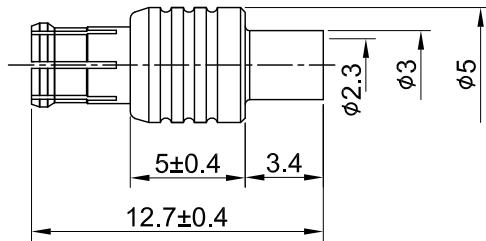


REV	DESCRIPTION	DATE
2.40	NEW DRAWING FRAME	2023/08/30
2.41	CORRECT INSULATION RESISTANCE UNIT	2024/01/16



RECOMMENDED STRIP LENGTHS



MECHANICAL DATA
TEMPERATURE RANGE : -65°C ~ + 165°C

ELECTRICAL DATA
FREQUENCY RANGE: DC~6GHZ
IMPEDANCE : 50Ω
VSWR : 1.3 MAX.
WORKING VOLTAGE : AC 335V
WITHSTANDING VOLTAGE : AC 500V
INSULATION RESISTANCE : 1000 MΩ MIN

06	FERRULE	BRASS	GOLD	1
05	GASKET	TEFLON	NONE	1
04	BODY B	BRASS	GOLD	1
03	CENTER PIN	BRASS	GOLD	1
02	INSULATOR	TEFLON	NONE	1
01	BODY A	Be.Cu	GOLD	1
NO	DESCRIPTION	MATERIAL	FINISH	Q'TY

TITLE		DRAWN BY: Kelly		2024/01/16	
MCX(M) st. for 1.48		CHK'D BY: Chili		2024/01/16	
DWG NO. C07AA31148004A		CUST. P/N: N/A		DWG NO: N/A	
SHEET 1 of 1		Unit: mm		DA2312270051	
GENERAL TOLERANCES		DRAWN BY: Kelly		2024/01/16	
.X ±0.2		CHK'D BY: Chili		2024/01/16	
.XX ±0.2		REVISION		2.41	
.XXX ±0.2		ANGLES N/A			

