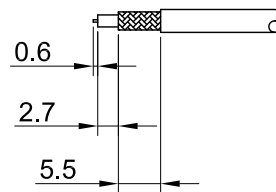
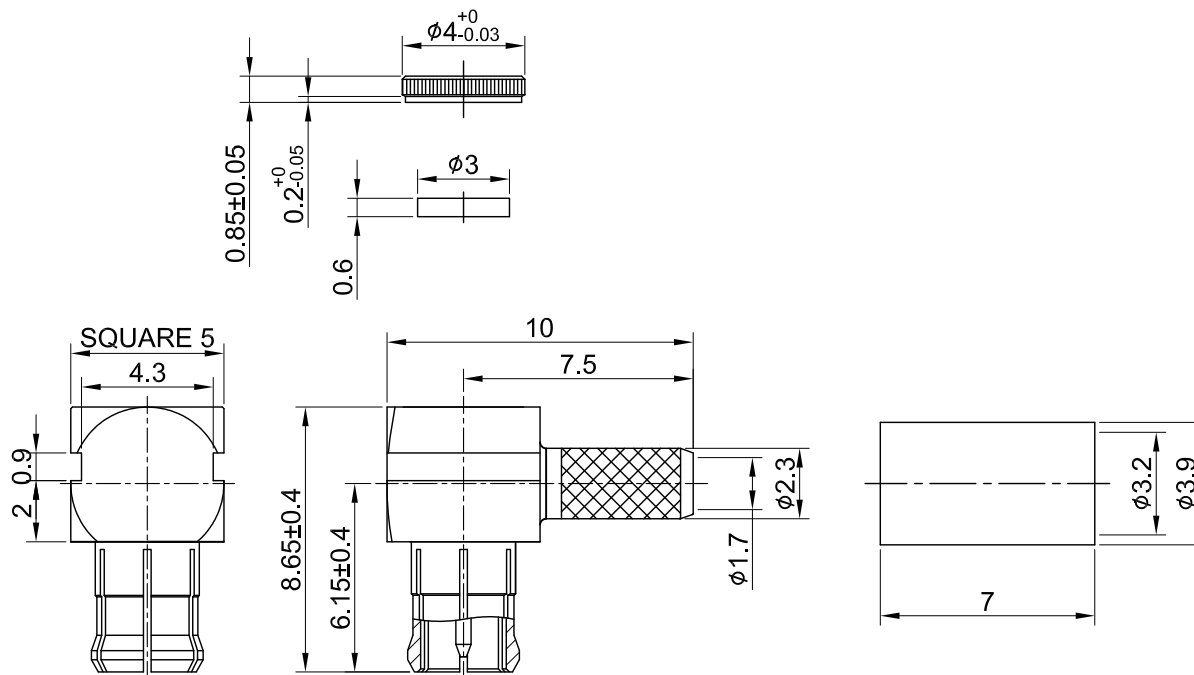


REV	DESCRIPTION	DATE
1.01	CHG DIM 0.85±0.05/φ4+0/-0.03 was 0.8/φ4, ADD DIM 0.2+0/-0.05	2014/05/02
1.10	NEW DRAWING FRAME	2024/09/09



RECOMMENDED STRIP LENGTHS



MECHANICAL DATA  
TEMPERATURE RANGE : -40°C ~ + 165°C

ELECTRICAL DATA  
FREQUENCY RANGE: DC~3GHZ  
IMPEDANCE : 75Ω  
VSWR : 1.5 MAX.  
WORKING VOLTAGE : AC 335V  
WITHSTANDING VOLTAGE : AC 500V  
INSULATION RESISTANCE : 1000 MΩ MIN

07	FERRULE	BRASS	GOLD	1
06	INSULATOR B	TEFLON	NONE	1
05	BODY B	Be.Cu	GOLD	1
04	PIN	BRASS	GOLD	1
03	BODY A	BRASS	GOLD	1
02	INSULATOR A	TEFLON	NONE	1
01	PRESS COVER	BRASS	GOLD	1
NO	DESCRIPTION	MATERIAL	FINISH	Q'TY

TITLE		DRAWN BY: Kelly		2024/09/09
MCX(M)ra. Crimp for RD179 double shield (75 ohm)		CHK'D BY: Mindy		2024/09/09
DWG NO. C07PA3F179D01		REVISION		1.10
CUST. P/N: N/A DWG NO: N/A		DA2409090012		
SHEET 1 of 1		Unit: mm		



GENERAL TOLERANCES		REVISION	
.X	±0.2	①	1.10
.XX	±0.2	②	
.XXX	±0.2	③	
ANGLES	N/A	④	