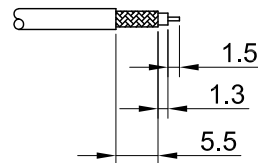
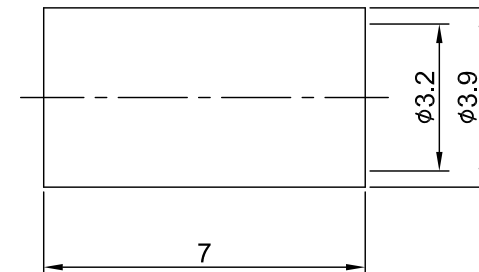
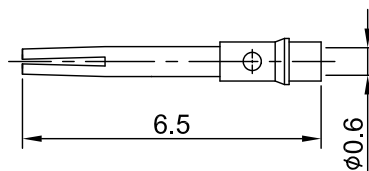
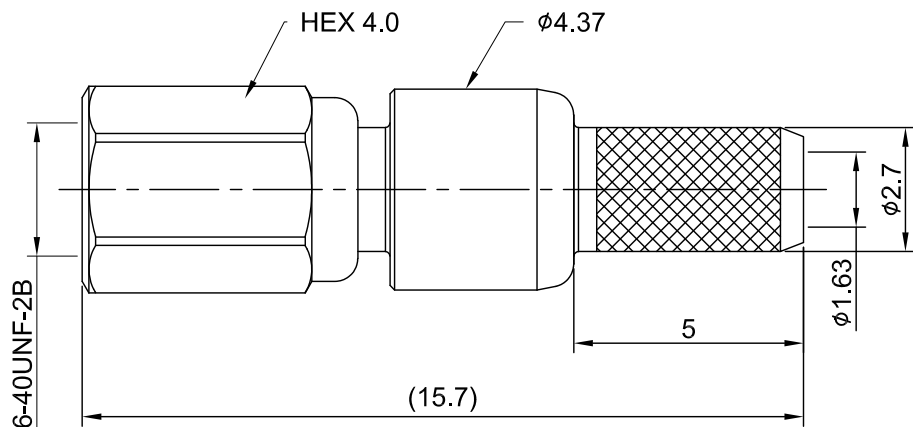


REV	DESCRIPTION	DATE
1.01	UPDATE BODY KNURLED AREA	2017/06/12
2.00	DESIGN CHANGES	2024/08/09



RECOMMENDED STRIP LENGTHS



MECHANICAL DATA
 DURABILITY : 500 CYCLES
 TEMPERATURE RANGE : -65°C ~ + 165°C

ELECTRICAL DATA
 FREQUENCY RANGE: DC~6GHz
 IMPEDANCE : 50Ω
 VSWR : 1.5 MAX.
 WORKING VOLTAGE : AC 175V
 WITHSTANDING VOLTAGE : AC 500V
 INSULATION RESISTANCE : 1000 MΩ MIN

06	FERRULE	BRASS	GOLD	1
05	CABLE BODY	BRASS	GOLD	1
04	CENTER PIN	Be.Cu	GOLD	1
03	INSULATOR	TEFLON	NONE	1
02	BODY	BRASS	GOLD	1
01	SHELL	BRASS	GOLD	1
NO	DESCRIPTION	MATERIAL	FINISH	Q'TY

TITLE		DRAWN BY:		DATE	
SSMC(M) st. crimp type for RG174		Kelly		2024/08/09	
DWG NO. C95AA3F174002		CHK'D BY:		Mindy 2024/08/09	
CUST. P/N: N/A DWG NO: N/A		GENERAL TOLERANCES		REV.	
SHEET 1 of 1 Unit: mm		.X ±0.2 .XX ±0.2 .XXX ±0.2 ANGLES N/A		DA2408080015 2.00	

