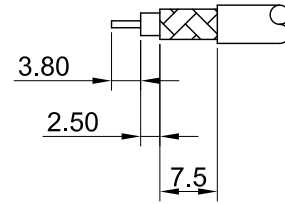
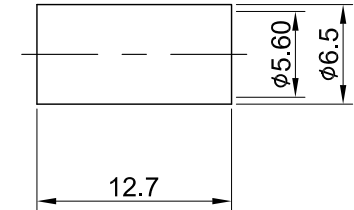
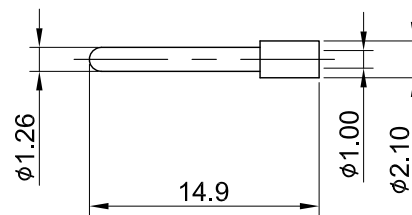
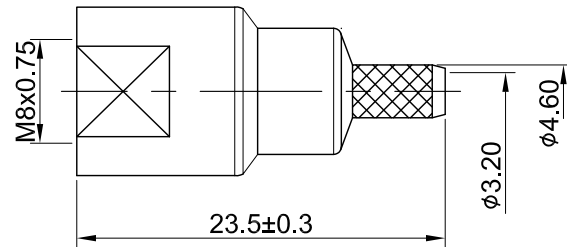
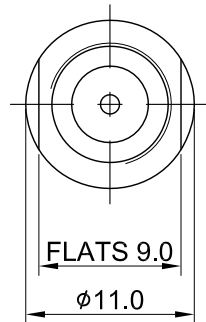


REV	DESCRIPTION	DATE
2.10	ADD GENERAL TOLERANCES ±0.4	2018/05/23
2.20	NEW DRAWING FRAME	2024/08/14



RECOMMENDED STRIP LENGTHS



MECHANICAL DATA
TEMPERATURE RANGE : -40°C ~ + 85°C

ELECTRICAL DATA
IMPEDANCE : 50Ω
WORKING VOLTAGE : AC 500V
WITHSTANDING VOLTAGE : AC 1000V
INSULATION RESISTANCE : 5000 MΩ MIN

04	RING	BRASS	NICKEL	1
03	CENTER PIN	BRASS	GOLD	1
02	INSULATOR	POM	NONE	1
01	BODY	BRASS	NICKEL	1
NO	DESCRIPTION	MATERIAL	FINISH	Q'TY

TITLE		DRAWN BY: Kelly		2024/08/14	
FME(M) st. crimp for RG58 A/U		CHK'D BY: Chilli		2024/08/14	
DWG NO. C29CA37058A02		REVISIONS		REV. 2.10	
CUST. P/N: N/A		GENERAL TOLERANCES		DA2408140002	
DWG NO: N/A		.X ±0.4			
SHEET 1 of 1		.XX ±0.2			
Unit: mm		.XXX ±0.2			
		ANGLES N/A			

