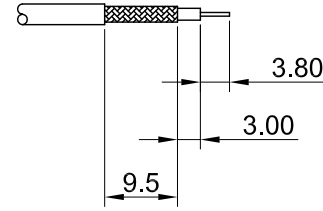
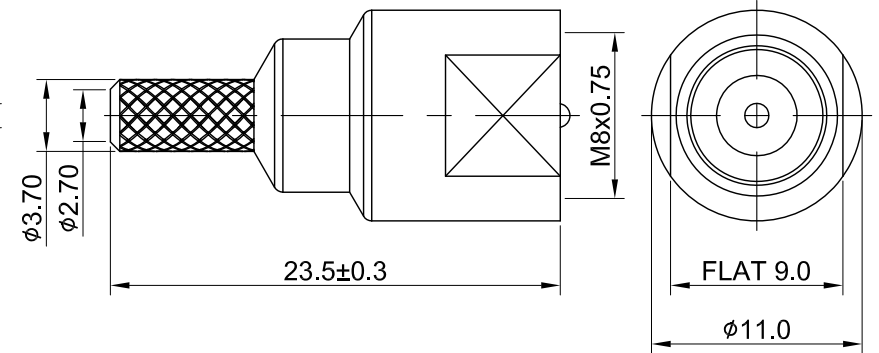
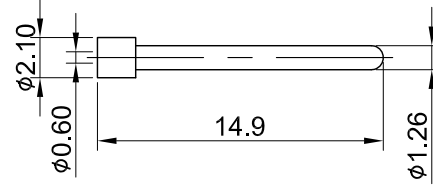
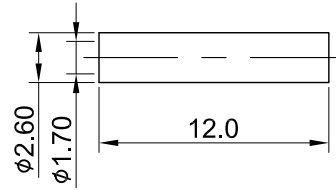
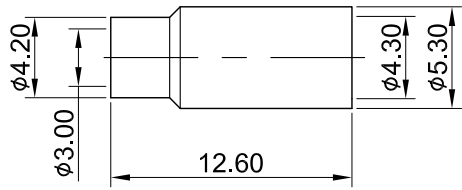


REV	DESCRIPTION	DATE
1.00	INITIAL DESIGN	2015/03/11
1.10	NEW DRAWING FRAME	2024/07/02
1.11	ADD ELECTRICAL DATA	2024/08/14



RECOMMENDED STRIP LENGTHS



MECHANICAL DATA
TEMPERATURE RANGE : -40°C ~ + 85°C

ELECTRICAL DATA
IMPEDANCE : 50Ω
WORKING VOLTAGE : AC 250V
WITHSTANDING VOLTAGE : AC 500V
INSULATION RESISTANCE : 5000 MΩ MIN

05	PLASTIC TUBE	POM	NONE	1
04	RING	BRASS	NICKEL	1
03	CENTER PIN	BRASS	GOLD	1
02	INSULATOR	POM	NONE	1
01	BODY	BRASS	NICKEL	1
NO	DESCRIPTION	MATERIAL	FINISH	Q'TY

TITLE		DRAWN BY: Kelly		2024/08/14	
FME(M) st. crimp type for RG174		CHK'D BY: Chilli		2024/08/14	
DWG NO. C29CA37174002A		CUST. P/N: N/A		DWG NO: N/A	
SHEET 1 of 1		Unit: mm		REV. 1.11	
DA2408140003					

GENERAL TOLERANCES

.X	±0.4
.XX	±0.2
.XXX	±0.2
ANGLES	N/A