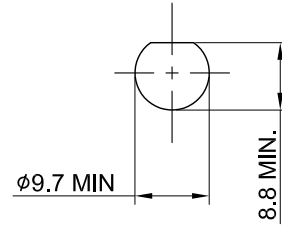
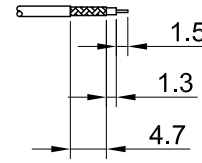


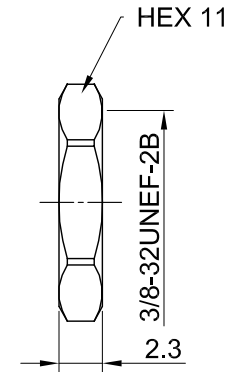
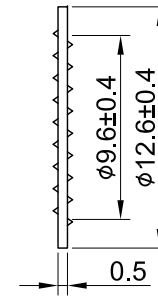
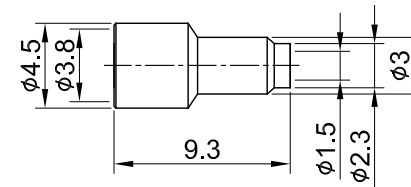
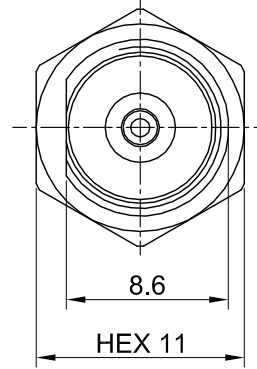
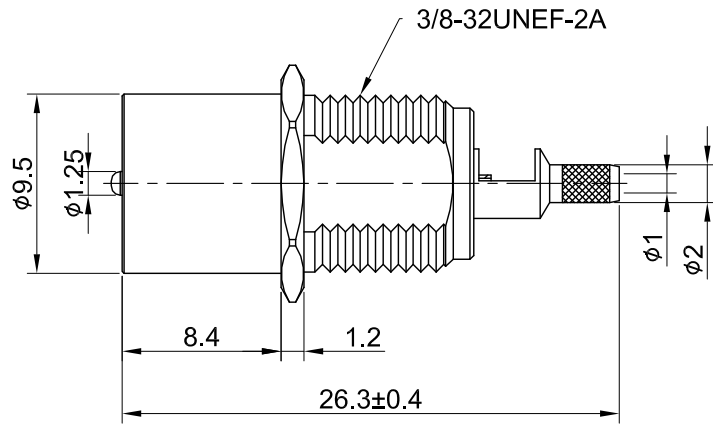
REV	DESCRIPTION	DATE
1.01	CHG PIN POSITION	2016/12/23
1.10	NEW DRAWING FRAME	2024/09/09



RECOMMENDED MOUNTING HOLE



RECOMMENDED STRIP LENGTHS



MECHANICAL DATA
TEMPERATURE RANGE : -65°C ~ + 165°C

ELECTRICAL DATA
FREQUENCY RANGE: DC~2GHz
IMPEDANCE : 50Ω
VSWR : 1.5 MAX.
WORKING VOLTAGE : AC 500V
WITHSTANDING VOLTAGE : AC 1000V
INSULATION RESISTANCE : 5000 MΩ MIN

08	NUT	BRASS	NICKEL	1	TITLE FME(M) bh. front mount crimp type for 1.37			
07	WASHER	STEEL	NICKEL	1				
06	FERRULE	BRASS	NICKEL	1	DWG NO. C29CK3F137005		GENERAL TOLERANCES .X ±0.2 .XX ±0.2 .XXX ±0.2 ANGLES N/A	
05	BODY B	BRASS	NICKEL	1				
04	INSULATOR B	TEFLON	NONE	1	CUST. P/N: N/A DWG NO: N/A		DRAWN BY: Kelly 2024/09/09 CHK'D BY: Chili 2024/09/09	
03	CENTER PIN	BRASS	GOLD	1				
02	INSULATOR A	TEFLON	NONE	1	SHEET 1 of 1 Unit: mm		REV. 1.10	
01	BODY A	BRASS	NICKEL	1				
NO	DESCRIPTION	MATERIAL	FINISH	Q'TY			DA2409090022	