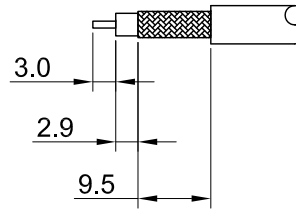
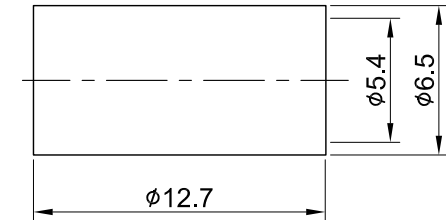
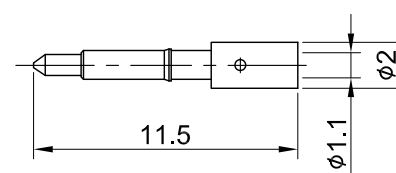
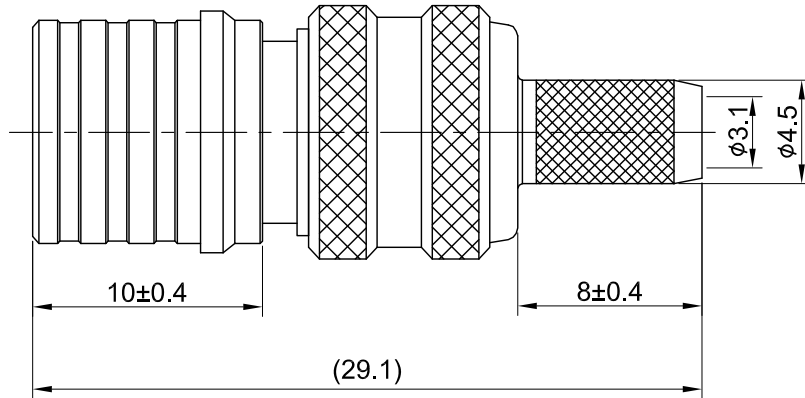


REV	DESCRIPTION	DATE
2.00	CHG DIM $\phi 3.1/(29.1)$ W. $\phi 3/(29)$, UPDATE BOM	2018/01/11
3.00	UPDATE DRAWING	2024/08/15



RECOMMENDED STRIP LENGTHS



MECHANICAL DATA
TEMPERATURE RANGE : -65°C ~ + 165°C

ELECTRICAL DATA
FREQUENCY RANGE: DC~6GHz
IMPEDANCE : 50Ω
VSWR : 1.5 MAX.
WORKING VOLTAGE : AC 500V
WITHSTANDING VOLTAGE : AC 1000V
INSULATION RESISTANCE : 5000 MΩ MIN

09	O RING	SILICONE RUBBER	RED	1
08	FERRULE	BRASS	NICKEL	1
07	CENTER PIN	BRASS	GOLD	1
06	BODY D	BRASS	NICKEL	1
05	BODY C	BRASS	NICKEL	1
04	INSULATOR	TEFLON	NONE	1
03	BODY B	BRASS	NICKEL	1
02	BODY A	BRASS	NICKEL	1
01	SHELL	BRASS	NICKEL	1
NO	DESCRIPTION	MATERIAL	FINISH	Q'TY

TITLE		QMA(M) st. crimp type for RG58(Ni)	
DWG NO.		C61CA3F058A05	
CUST. P/N: N/A		DRAWN BY: Kelly 2024/08/15	
DWG NO: N/A		CHK'D BY: Eileen 2024/08/15	
SHEET 1 of 1		Unit: mm	
GENERAL TOLERANCES			
.X	±0.2		
.XX	±0.2		
.XXX	±0.2		
ANGLES	N/A	DA2408150005	
		REV. 3.00	