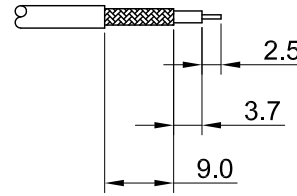
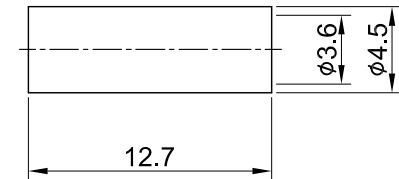
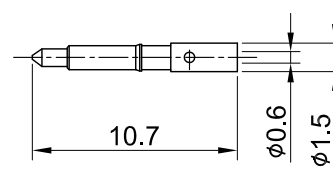
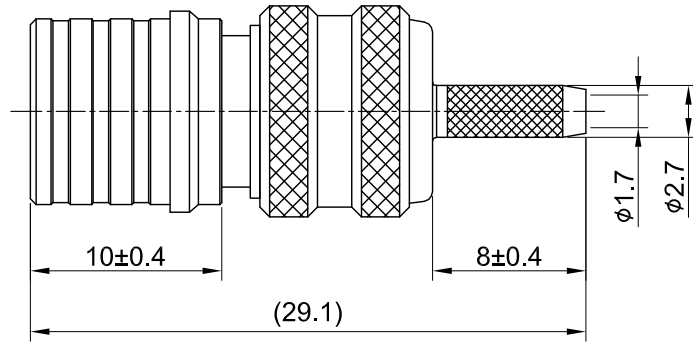


REV	DESCRIPTION	DATE
1.00	INITIAL DESIGN	2013/12/09
1.10	NEW DRAWING FRAME	2024/08/14



RECOMMENDED STRIP LENGTHS



MECHANICAL DATA  
TEMPERATURE RANGE : -65°C ~ + 165°C

ELECTRICAL DATA  
FREQUENCY RANGE: DC~6GHz  
IMPEDANCE : 50Ω  
VSWR : 1.5 MAX.  
WORKING VOLTAGE : AC 500V  
WITHSTANDING VOLTAGE : AC 1000V  
INSULATION RESISTANCE : 5000 MΩ MIN

09	O RING	SILICONE RUBBER	RED	1
08	FERRULE	BRASS	NICKEL	1
07	CENTER PIN	BRASS	GOLD	1
06	BODY D	BRASS	NICKEL	1
05	BODY C	BRASS	NICKEL	1
04	INSULATOR	TEFLON	NONE	1
03	BODY B	BRASS	NICKEL	1
02	BODY A	BRASS	NICKEL	1
01	SHELL	BRASS	NICKEL	1
NO	DESCRIPTION	MATERIAL	FINISH	Q'TY

TITLE		QMA(M) st. for RD316 (NI)	
DWG NO.		C61CA3F316D05	
CUST. P/N: N/A		DRAWN BY: Kelly 2024/08/14	
DWG NO: N/A		CHK'D BY: Eileen 2024/08/14	
SHEET 1 of 1		Unit: mm	
Unit: mm			
GENERAL TOLERANCES .X ±0.2 .XX ±0.2 .XXX ±0.2 ANGLES N/A		DA2408140007 REV. 1.10	