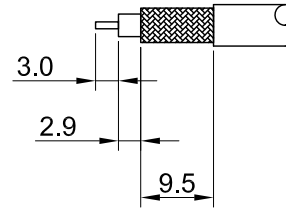
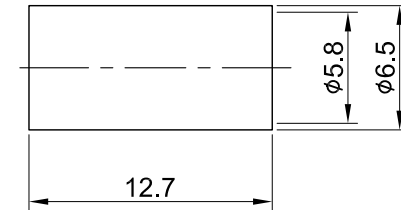
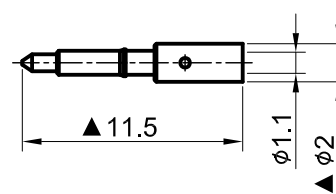
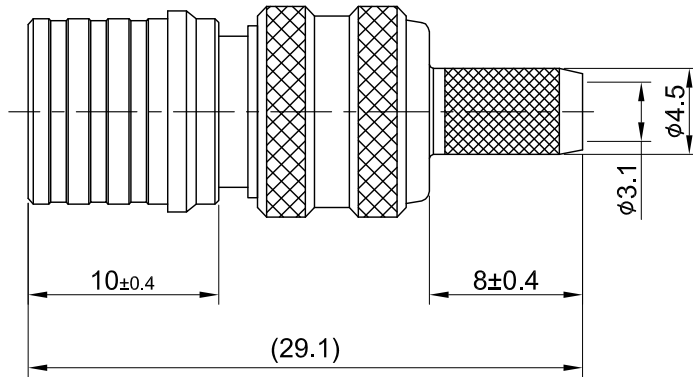


REV	DESCRIPTION	DATE
2.10	CORRECT FULL MATERIAL NAME SILICON RUBBER, CHG $\phi 1.1$ W. $\phi 1$	2021/01/12
2.20	CHG PIN DESIGN	2024/05/08



▲ RECOMMENDED STRIP LENGTHS



MECHANICAL DATA  
TEMPERATURE RANGE :  $-65^{\circ}\text{C} \sim + 165^{\circ}\text{C}$

ELECTRICAL DATA  
FREQUENCY RANGE: DC~6GHZ  
IMPEDANCE :  $50\Omega$   
VSWR : 1.5 MAX.  
WORKING VOLTAGE : AC 500V  
WITHSTANDING VOLTAGE : AC 1000V  
INSULATION RESISTANCE :  $5000\text{ M}\Omega$  MIN

09	BODY B	BRASS	NICKEL	1
08	PRESS BODY	BRASS	NICKEL	1
07	SHELL	BRASS	NICKEL	1
06	FERRULE	BRASS	NICKEL	1
05	CABLE BODY	BRASS	NICKEL	1
04	O RING	SILICONE RUBBER	RED	1
03	CENTER PIN	BRASS	GOLD	1
02	INSULATOR	TEFLON	NONE	1
01	BODY A	BRASS	NICKEL	1
NO	DESCRIPTION	MATERIAL	FINISH	Q'TY

TITLE		QMA(M)st. crimp for RG223	
DWG NO.		C61CA3F223005	
CUST. P/N:		N/A	
DWG NO:		N/A	
SHEET 1 of 1		Unit: mm	
GENERAL TOLERANCES		DRAWN BY: Kelly 2024/05/08	
.X $\pm 0.2$		CHK'D BY: David 2024/05/08	
.XX $\pm 0.2$		REV.	
.XXX $\pm 0.2$		2.20	
ANGLES N/A		DA2405080007	

