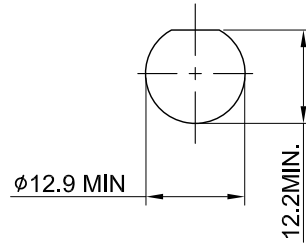
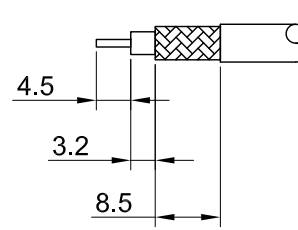


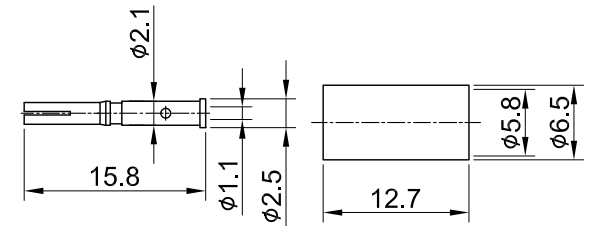
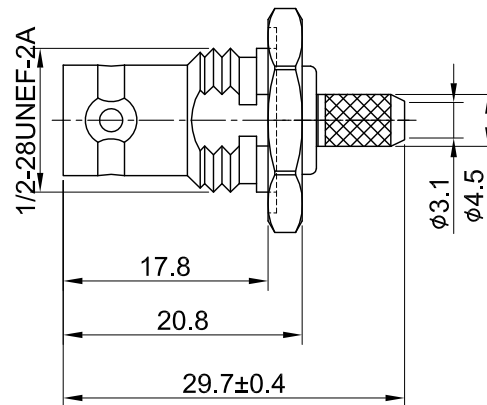
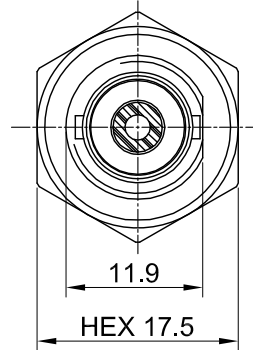
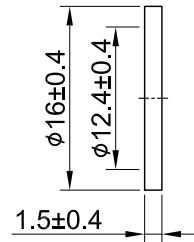
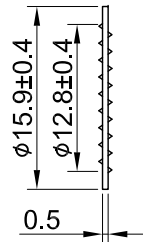
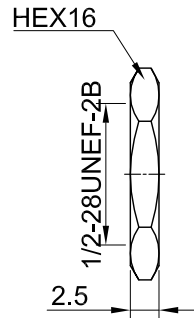
REV	DESCRIPTION	DATE
1.10	CHG WASHER Material BRASS w. STEEL	2018/05/07
1.20	NEW DRAWING FRAME	2024/10/18



RECOMMENDED MOUNTING HOLE



RECOMMENDED STRIP LENGTHS



MECHANICAL DATA
 DURABILITY : 10 CYCLES
 TEMPERATURE RANGE : -65°C ~ + 165°C

ELECTRICAL DATA
 FREQUENCY RANGE: DC~4GHz
 IMPEDANCE : 50Ω
 VSWR : 1.5 MAX.
 WORKING VOLTAGE : AC 500V
 WITHSTANDING VOLTAGE : AC 1500V
 INSULATION RESISTANCE : 5000 MΩ MIN

08	NUT	BRASS	NICKEL	1
07	WASHER	BRASS	NICKEL	1
06	FERRULE	BRASS	NICKEL	1
05	BODY B	BRASS	NICKEL	1
04	O RING	SILICONE RUBBER	RED	1
03	CENTER PIN	BRASS	GOLD	1
02	INSULATOR	TEFLON	NONE	1
01	BODY A	BRASS	NICKEL	1
NO	DESCRIPTION	MATERIAL	FINISH	Q'TY

TITLE		DRAWN BY: Kelly		2024/10/18
BNC(F)st.bh.wOring for RG142/RG400		CHK'D BY: Chili		2024/10/18
DWG NO. C16CD3F400012B		REV.		1.20
CUST. P/N: N/A		DA2410180004		
DWG NO: N/A				
SHEET 1 of 1		Unit: mm		



GENERAL TOLERANCES	
.X	±0.2
.XX	±0.2
.XXX	±0.2
ANGLES	N/A