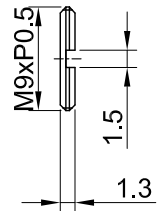
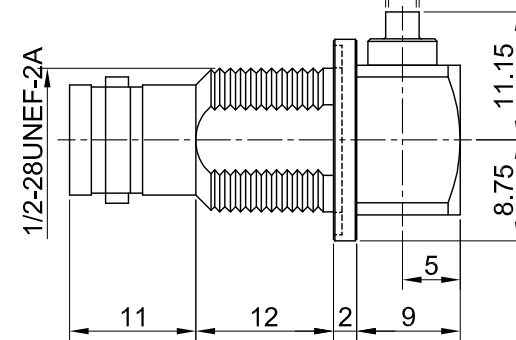
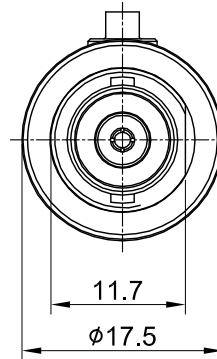
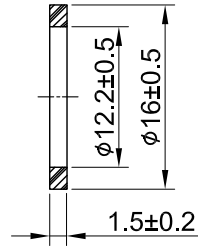
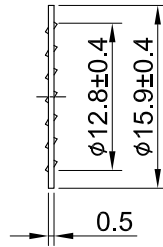
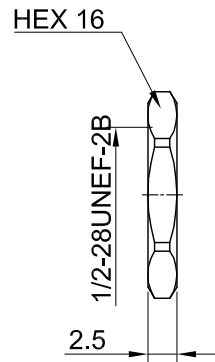
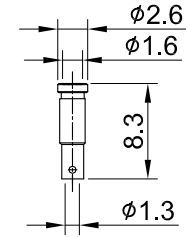
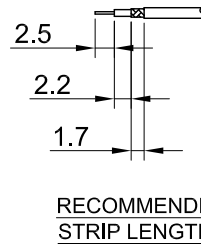
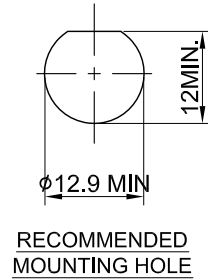
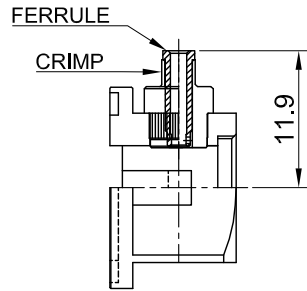



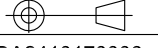
REV	DESCRIPTION	DATE
4.10	NEW DRAWING FRAME	2023/06/12
4.11	UPDATE ELECTRICAL DATA	2024/10/17



MECHANICAL DATA
 DURABILITY : 100 CYCLES
 TEMPERATURE RANGE : -65°C ~ + 165°C

ELECTRICAL DATA
 FREQUENCY RANGE: DC~1GHz
 IMPEDANCE : 50Ω
 VSWR : 1.5 MAX.
 WORKING VOLTAGE : AC 500V
 WITHSTANDING VOLTAGE : AC 1500V
 INSULATION RESISTANCE : 5000 MΩ MIN

09	NUT	BRASS	NICKEL	1
08	WASHER	BRASS	NICKEL	1
07	GASKET	SILICONE RUBBER	RED	1
06	FERRULE	BRASS	NICKEL+FLUX	1
05	CAP	BRASS	NICKEL	1
04	BODY B	BRASS	NICKEL	1
03	CENTER PIN	P.BRONZE	GOLD	1
02	INSULATOR	TEFLON	NONE	1
01	BODY A	BRASS	NICKEL	1
NO	DESCRIPTION	MATERIAL	FINISH	Q'TY

TITLE			
BNC(F) ra. bh. wOring for 1.37 cable			
DWG NO.		DRAWN BY: Kelly 2024/10/17	
C16DD3F137049		CHK'D BY: Chili 2024/10/17	
CUST. P/N: N/A			
DWG NO: N/A			
SHEET 1 of 1		REV. 4.11	
Unit: mm		DA2410170006	

GENERAL TOLERANCES	
.X	±0.2
.XX	±0.2
.XXX	±0.2
ANGLES	N/A