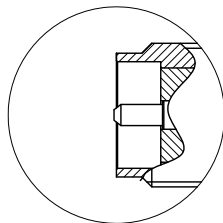
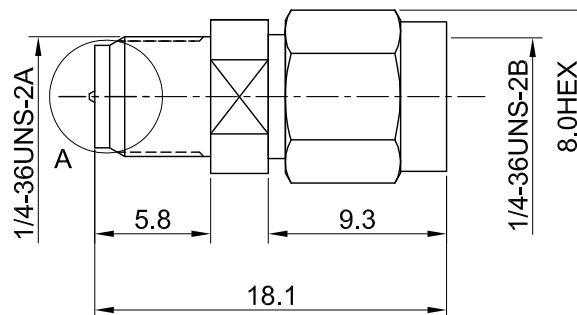
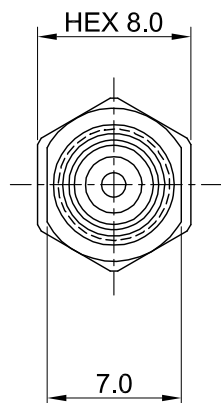


REV	DESCRIPTION	DATE
1.10	ADD DIM 7.0 & 8.0HEX, ADD ELECTRICAL PERFORMANCE, ADD INTERFACE INSULATOR	2014/09/17
1.20	NEW DRAWING FRAME	2024/01/02



DETAIL A



MECHANICAL DATA
TEMPERATURE RANGE : -65°C ~ + 165°C

ELECTRICAL DATA
FREQUENCY RANGE: DC~10GHz
IMPEDANCE : 50Ω
VSWR : 1.3 MAX.
WORKING VOLTAGE : AC 500V
WITHSTANDING VOLTAGE : AC 1000V
INSULATION RESISTANCE : 5000 MΩ MIN

06	SHELL	BRASS	GOLD	1
05	RING	Be.Cu	NONE	1
04	GASKET	SILICONE RUBBER	NONE	1
03	CENTER PIN	BRASS	GOLD	1
02	INSULATOR	TEFLON	NONE	1
01	BODY	BRASS	GOLD	1
NO	DESCRIPTION	MATERIAL	FINISH	Q'TY

TITLE		DRAWN BY:		CHK'D BY:		REVISION	
SMA Male to RP SMA Female (Gold)		Kelly		Maria		2024/01/02	
DWG NO. C0A00310120-01		DRAWN BY: Kelly		CHK'D BY: Maria		2024/01/02	
CUST. P/N: N/A DWG NO: N/A		DRAWN BY: Kelly		CHK'D BY: Maria		2024/01/02	
SHEET 1 of 1		Unit: mm		DA2312270028		REV. 1.20	



GENERAL TOLERANCES
.X ±0.2
.XX ±0.2
.XXX ±0.2
ANGLES N/A

