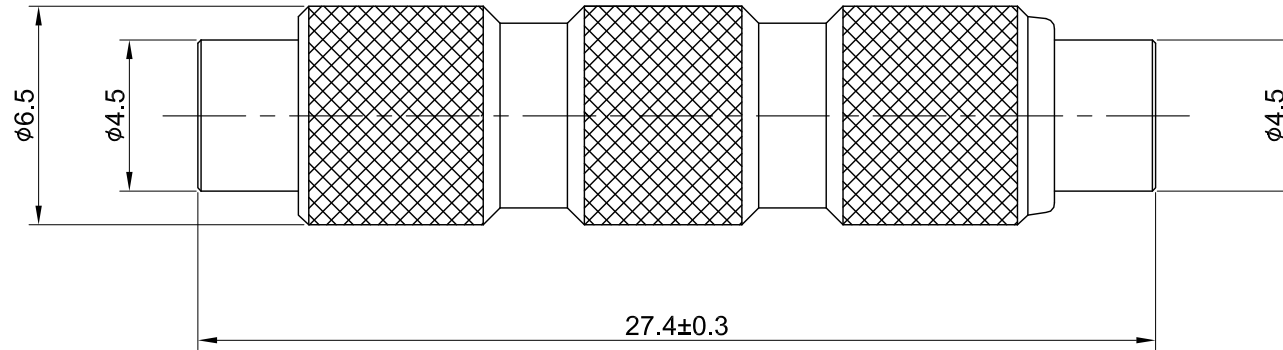



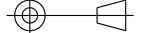
REV	DESCRIPTION	DATE
1.02	CHG DIM 27.4±0.3 W3 28±0.3	2013/10/30
1.10	NEW DRAWING FRAME	2024/03/18



MECHANICAL DATA
 DURABILITY : 500 CYCLES
 TEMPERATURE RANGE : -65°C ~ + 165°C

ELECTRICAL DATA
 FREQUENCY RANGE: DC~6GHZ
 IMPEDANCE : 50Ω
 VSWR : 1.3 MAX.
 WORKING VOLTAGE : AC 335V
 WITHSTANDING VOLTAGE : AC 500V
 INSULATION RESISTANCE : 1000 MΩ MIN

04	CENTER PIN	Be.Cu	GOLD	1
03	INSULATOR	TEFLON	NONE	2
02	BODY B	BRASS	GOLD	1
01	BODY A	BRASS	GOLD	1
NO	DESCRIPTION	MATERIAL	FINISH	Q'TY

TITLE	
MCX(F) to MCX(F) adaptor, L=27.4+/-0.3mm	
DWG NO. C0A003F0808-01	
CUST. P/N: N/A DWG NO: N/A	
SHEET 1 of 1	GENERAL TOLERANCES .X ±0.2 .XX ±0.2 .XXX ±0.2 ANGLES N/A
Unit: mm	DRAWN BY: Kelly 2024/03/18 CHK'D BY: Kana 2024/03/18  REV. 1.10 DA2401310010